

Product datasheet for **TA318659**

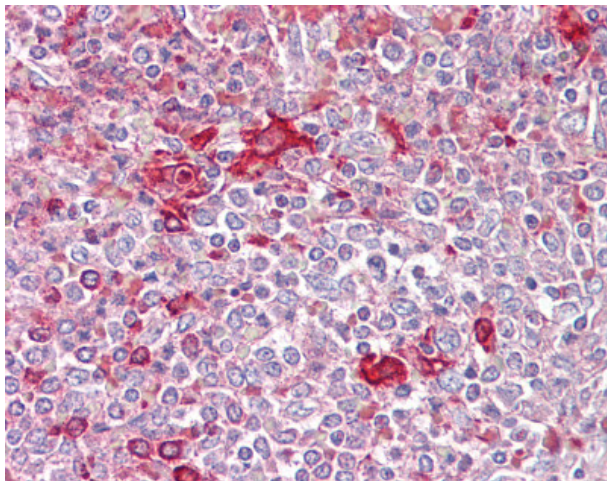
TLR5 Rabbit Polyclonal Antibody

Product data:

Product Type:	Primary Antibodies
Applications:	IHC
Recommended Dilution:	IHC-P (10 µg/ml), WB (1 - 3 µg/ml)
Reactivity:	Human, Mouse, Rat
Host:	Rabbit
Isotype:	IgG
Clonality:	Polyclonal
Immunogen:	TLR5 antibody was raised against synthetic peptide from human TLR5.
Formulation:	PBS containing 0.05% BSA and 0.05% sodium azide
Purification:	Protein G Column
Conjugation:	Unconjugated
Storage:	Store at -20°C as received.
Stability:	Stable for 12 months from date of receipt.
Gene Name:	toll like receptor 5
Database Link:	NP_003259 Entrez Gene 53791 Mouse Entrez Gene 289337 Rat Entrez Gene 7100 Human O60602
Synonyms:	MELIOS; SLE1; SLEB1; TIL3
Note:	Specific for KLH-conjugated synthetic peptide corresponding to a portion of human TLR5 found between amino acids 300-350. It will cross-react with mouse and rat TLR5.
Protein Families:	Druggable Genome, Transmembrane
Protein Pathways:	Pathogenic Escherichia coli infection, Toll-like receptor signaling pathway



[View online »](#)

Product images:

Anti-TLR5 antibody IHC of human spleen. Immunohistochemistry of formalin-fixed, paraffin-embedded tissue after heat-induced antigen retrieval. Antibody concentration 10 ug/ml.