

Product datasheet for **TA317687**

WNT9B Rabbit Polyclonal Antibody

Product data:

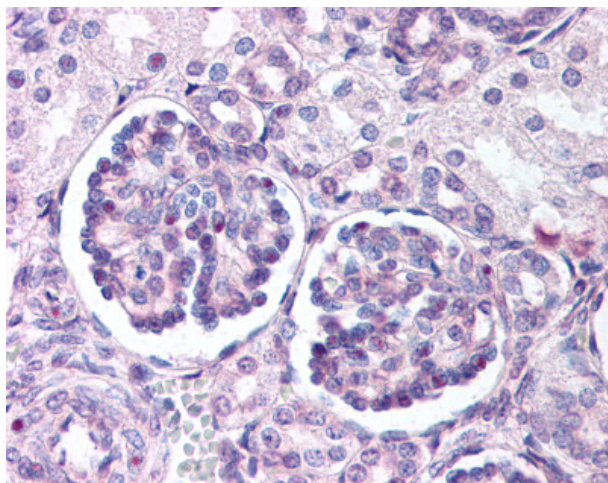
Product Type:	Primary Antibodies
Applications:	IHC
Recommended Dilution:	IHC-P (10 µg/ml)
Reactivity:	Bovine, Gorilla, Human, Monkey, Mouse, Pig, Rat, Gibbon, Hamster, Horse (Predicted: Bat, Rabbit)
Host:	Rabbit
Isotype:	IgG
Clonality:	Polyclonal
Immunogen:	WNT9B / WNT15 antibody was raised against synthetic 16 amino acid peptide from internal region of human WNT9B. Percent identity with other species by BLAST analysis: Human, Gorilla, Gibbon, Monkey, Marmoset, Mouse, Rat, Hamster, Elephant, Panda, Bovine, Horse, Pig (100%); Bat, Rabbit (94%); Dog (88%).
Formulation:	PBS, 0.1% sodium azide.
Concentration:	lot specific
Purification:	Immunoaffinity Chromatography
Conjugation:	Unconjugated
Storage:	Store at -20°C as received.
Stability:	Stable for 12 months from date of receipt.
Gene Name:	Wnt family member 9B
Database Link:	NP_003387 Entrez Gene 22412 MouseEntrez Gene 303586 RatEntrez Gene 716877 MonkeyEntrez Gene 7484 Human O14905
Synonyms:	WNT14B; WNT15
Note:	Specific for Human WNT9B. BLAST analysis of the peptide immunogen showed no homology with other human proteins.
Protein Families:	Secreted Protein, Transmembrane



[View online »](#)

Protein Pathways: Basal cell carcinoma, Hedgehog signaling pathway, Melanogenesis, Pathways in cancer, Wnt signaling pathway

Product images:



Anti-WNT9B antibody IHC of human fetal kidney. Immunohistochemistry of formalin-fixed, paraffin-embedded tissue after heat-induced antigen retrieval.