

Product datasheet for **TA317438**

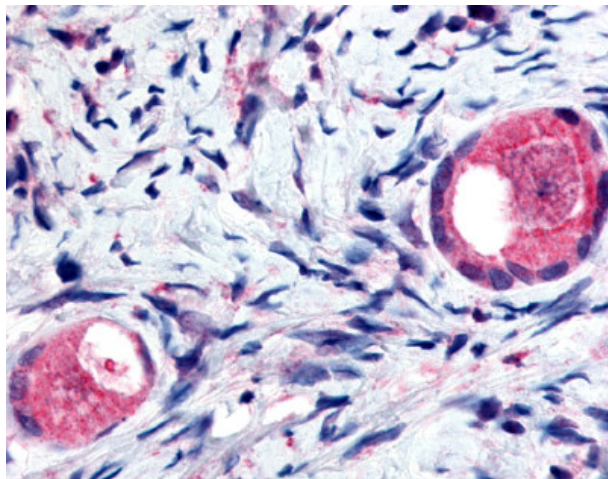
RXYLT1 Rabbit Polyclonal Antibody

Product data:

Product Type:	Primary Antibodies
Applications:	IHC
Recommended Dilution:	IHC-P (5 µg/ml)
Reactivity:	Gorilla, Human, Gibbon (Predicted: Monkey, Mouse, Rat, Dog, Horse)
Host:	Rabbit
Isotype:	IgG
Clonality:	Polyclonal
Immunogen:	TMEM5 antibody was raised against synthetic 18 amino acid peptide from extracellular domain of human TMEM5. Percent identity with other species by BLAST analysis: Human, Gorilla, Gibbon, Monkey (100%); Marmoset, Mouse, Rat, Dog, Panda, Horse (94%); Bovine, Elephant, Pig (89%).
Formulation:	PBS, 0.1% sodium azide.
Concentration:	lot specific
Purification:	Immunoaffinity Chromatography
Conjugation:	Unconjugated
Storage:	Store at -20°C as received.
Stability:	Stable for 12 months from date of receipt.
Gene Name:	transmembrane protein 5
Database Link:	NP_055069 Entrez Gene 216395 MouseEntrez Gene 299841 RatEntrez Gene 608152 DogEntrez Gene 717102 MonkeyEntrez Gene 10329 Human Q9Y2B1
Synonyms:	HP10481; MDDGA10
Note:	Specific for Human TMEM5. BLAST analysis of the peptide immunogen showed no homology with other human proteins, except CACYBP (50%).
Protein Families:	Transmembrane



[View online »](#)

Product images:

Anti-TMEM5 antibody IHC of human ovary, oocytes. Immunohistochemistry of formalin-fixed, paraffin-embedded tissue after heat-induced antigen retrieval.