

Product datasheet for **TA317329**

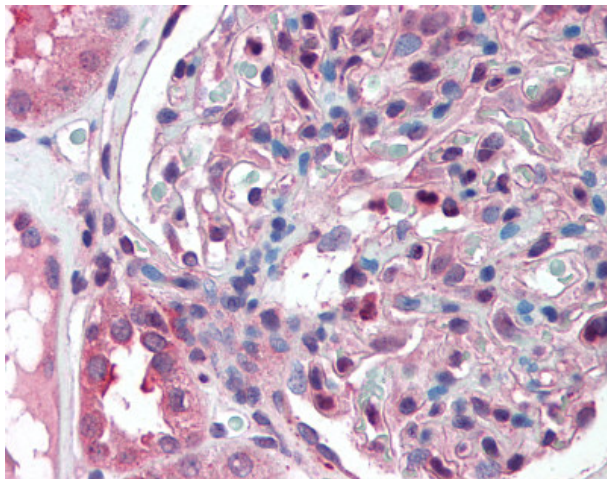
SLC39A14 Rabbit Polyclonal Antibody

Product data:

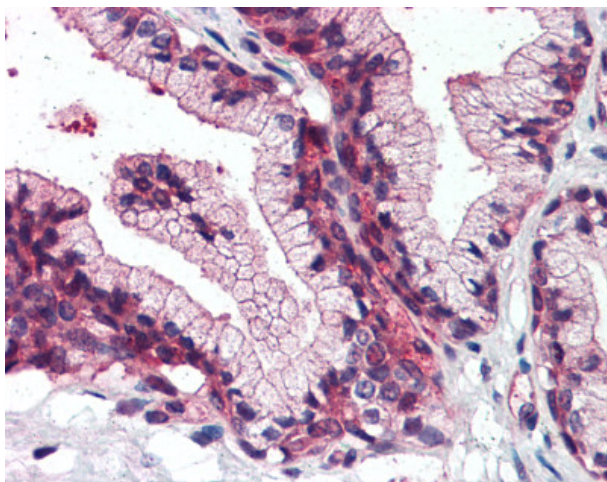
Product Type:	Primary Antibodies
Applications:	IHC
Recommended Dilution:	IHC-P (5 - 7.5 µg/ml)
Reactivity:	Gorilla, Human, Monkey, Pig, Gibbon, Orang-Utan (Predicted: Bovine, Dog, Hamster)
Host:	Rabbit
Isotype:	IgG
Clonality:	Polyclonal
Immunogen:	SLC39A14 / ZIP14 antibody was raised against synthetic 15 amino acid peptide from cytoplasmic domain of human SLC39A14. Percent identity with other species by BLAST analysis: Human, Gorilla, Orangutan, Gibbon, Monkey, Marmoset, Pig (100%); Bovine, Dog, Hamster, Elephant, Panda (93%); Rat, Bat, Rabbit, Horse, Opossum (87%); Mouse (80%).
Formulation:	PBS, 0.1% sodium azide.
Purification:	Immunoaffinity Chromatography
Conjugation:	Unconjugated
Storage:	Store at -20°C as received.
Stability:	Stable for 12 months from date of receipt.
Gene Name:	solute carrier family 39 member 14
Database Link:	NP_056174 Entrez Gene 486124 Dog Entrez Gene 716112 Monkey Entrez Gene 23516 Human Q15043
Synonyms:	cig19; HMNDYT2; LZT-Hs4; NET34; ZIP14
Note:	Specific for Human SLC39A14. BLAST analysis of the peptide immunogen showed no homology with other human proteins.
Protein Families:	Transmembrane



[View online »](#)

Product images:

Anti-SLC39A14 antibody IHC of human kidney. Immunohistochemistry of formalin-fixed, paraffin-embedded tissue after heat-induced antigen retrieval.



Anti-SLC39A14 antibody IHC of human prostate. Immunohistochemistry of formalin-fixed, paraffin-embedded tissue after heat-induced antigen retrieval.