

Product datasheet for **TA317260**

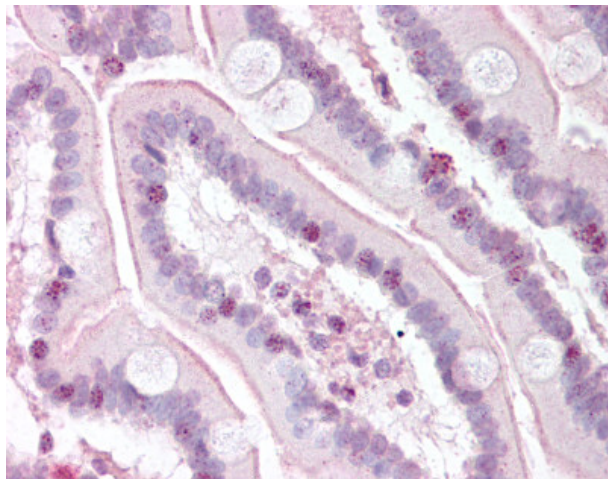
RTEL1 Rabbit Polyclonal Antibody

Product data:

Product Type:	Primary Antibodies
Applications:	IHC
Recommended Dilution:	ELISA (1 µg/ml), IHC-P (5 µg/ml), WB (1 µg/ml)
Reactivity:	Human, Mouse
Host:	Rabbit
Isotype:	IgG
Clonality:	Polyclonal
Immunogen:	RTEL1 antibody was raised against synthetic peptide from human RTEL1.
Formulation:	PBS, 0.01% sodium azide, 50% glycerol.
Concentration:	lot specific
Purification:	Immunoaffinity Chromatography
Conjugation:	Unconjugated
Storage:	Store at -20°C as received.
Stability:	Stable for 12 months from date of receipt.
Gene Name:	regulator of telomere elongation helicase 1
Database Link:	NP_116575 Entrez Gene 269400 Mouse Entrez Gene 51750 Human Q9NZ71
Synonyms:	C20orf41; DKCA4; DKCB5; NHL; PFBMFT3; RTEL
Note:	Synthetic peptide corresponding to N-terminal residues of human RTEL1 (Regulator of telomere elongation helicase 1).
Protein Families:	Druggable Genome



[View online »](#)

Product images:

Anti-RTEL1 antibody IHC of human small intestine. Immunohistochemistry of formalin-fixed, paraffin-embedded tissue after heat-induced antigen retrieval. Antibody concentration 5 ug/ml.