

Product datasheet for **TA317155**

PDE8A Rabbit Polyclonal Antibody

Product data:

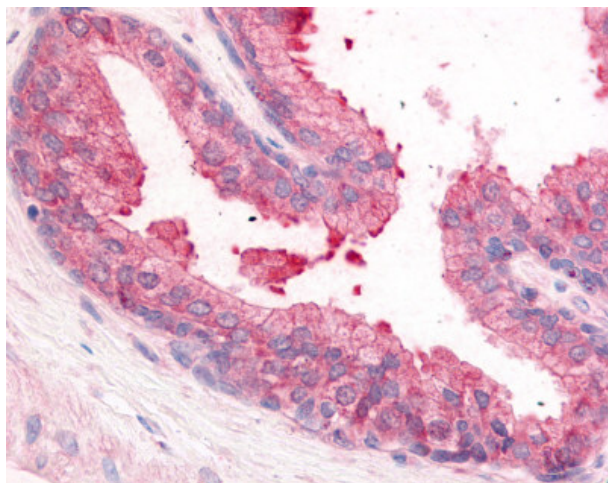
Product Type:	Primary Antibodies
Applications:	IHC
Recommended Dilution:	IHC-P (10 µg/ml)
Reactivity:	Dog, Gorilla, Human, Pig, Rabbit, Gibbon, Horse (Predicted: Monkey)
Host:	Rabbit
Isotype:	IgG
Clonality:	Polyclonal
Immunogen:	PDE8A antibody was raised against synthetic 16 amino acid peptide from near N-terminus of human PDE8A. Percent identity with other species by BLAST analysis: Human, Gorilla, Gibbon, Monkey, Dog, Panda, Horse, Rabbit, Pig (100%); Marmoset (94%); Mouse, Rat, Bovine, Elephant, Opossum (88%); Platypus, Zebrafish (81%).
Formulation:	PBS, 0.1% sodium azide.
Concentration:	lot specific
Purification:	Immunoaffinity Chromatography
Conjugation:	Unconjugated
Storage:	Store at -20°C as received.
Stability:	Stable for 12 months from date of receipt.
Gene Name:	phosphodiesterase 8A
Database Link:	NP_775659 Entrez Gene 488752 Dog Entrez Gene 694750 Monkey Entrez Gene 5151 Human O60658
Synonyms:	5'-cyclic phosphodiesterase 8A; cAMP-specific cyclic nucleotide phosphodiesterase 8A; FLJ16150; high-affinity cAMP-specific and IBMX-insensitive 3'; HsT19550; OTTHUMP00000192898; phosphodiesterase 8A
Note:	Specific for Human PDE8A. BLAST analysis of the peptide immunogen showed no homology with other human proteins.
Protein Families:	Druggable Genome



[View online »](#)

Protein Pathways: Progesterone-mediated oocyte maturation, Purine metabolism

Product images:



Anti-PDE8A antibody IHC of human prostate. Immunohistochemistry of formalin-fixed, paraffin-embedded tissue after heat-induced antigen retrieval.