

Product datasheet for **TA317149**

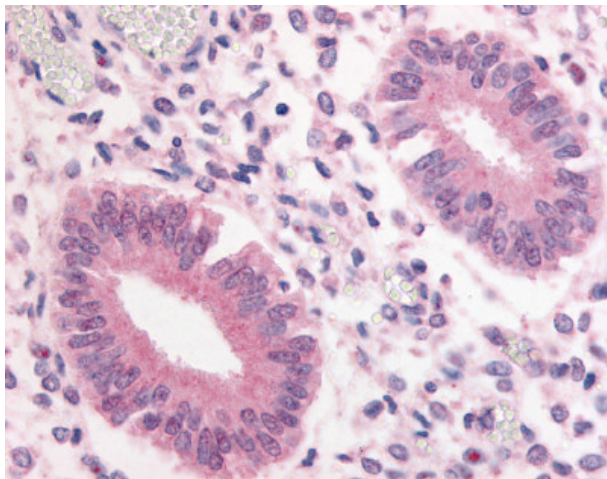
PDE3A Rabbit Polyclonal Antibody

Product data:

Product Type:	Primary Antibodies
Applications:	IHC
Recommended Dilution:	IHC-P (20 µg/ml)
Reactivity:	Human, Monkey, Mouse, Rat, Gibbon, Horse
Host:	Rabbit
Isotype:	IgG
Clonality:	Polyclonal
Immunogen:	PDE3A antibody was raised against synthetic 17 amino acid peptide from internal region of human PDE3A. Percent identity with other species by BLAST analysis: Human, Gibbon, Monkey, Mouse, Rat, Horse, Opossum (100%); Chicken (88%).
Formulation:	PBS, 0.1% sodium azide.
Concentration:	lot specific
Purification:	Immunoaffinity Chromatography
Conjugation:	Unconjugated
Storage:	Store at -20°C as received.
Stability:	Stable for 12 months from date of receipt.
Gene Name:	phosphodiesterase 3A
Database Link:	NP_000912 Entrez Gene 50678 Rat Entrez Gene 54611 Mouse Entrez Gene 704524 Monkey Entrez Gene 5139 Human Q14432
Synonyms:	CGI-PDE; CGI-PDE-A; CGI-PDE A
Note:	Specific for Human PDE3A. BLAST analysis of the peptide immunogen showed no homology with other human proteins.
Protein Families:	Druggable Genome, Transmembrane
Protein Pathways:	Insulin signaling pathway, Progesterone-mediated oocyte maturation, Purine metabolism



[View online »](#)

Product images:

Anti-PDE3A antibody IHC of human uterus.
Immunohistochemistry of formalin-fixed,
paraffin-embedded tissue after heat-induced
antigen retrieval.