

## Product datasheet for **TA317121**

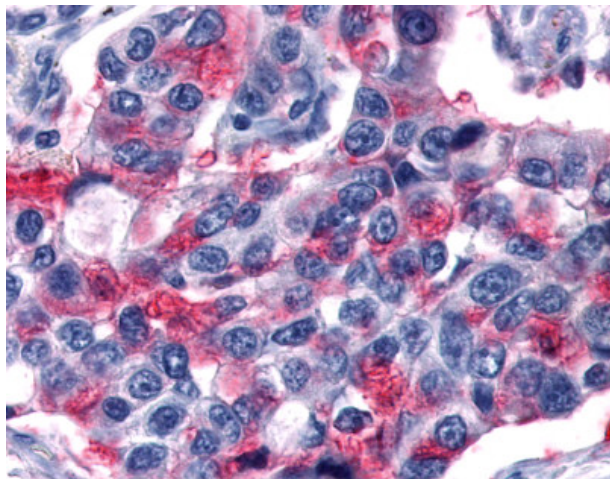
### OXGR1 Rabbit Polyclonal Antibody

#### Product data:

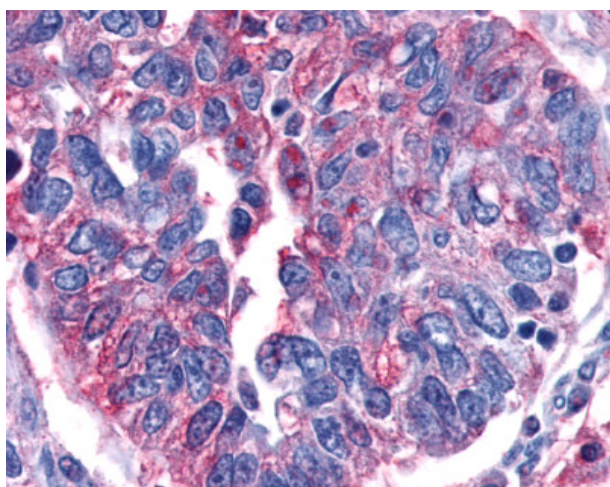
Product Type:	Primary Antibodies
Applications:	IHC
Recommended Dilution:	IHC-P (22 µg/ml)
Reactivity:	Gorilla, Human, Monkey (Predicted: Bat, Dog, Horse)
Host:	Rabbit
Isotype:	IgG
Clonality:	Polyclonal
Immunogen:	GPR80 / GPR99 / OXGR1 antibody was raised against synthetic 16 amino acid peptide from 3rd extracellular domain of human OXGR1. Percent identity with other species by BLAST analysis: Human, Gorilla, Monkey, Marmoset (100%); Gibbon, Dog, Bat, Elephant, Panda, Horse (94%); Mouse, Rat, Bovine (88%); Rabbit (81%).
Formulation:	PBS, 0.1% sodium azide.
Concentration:	lot specific
Purification:	Immunoaffinity Chromatography
Conjugation:	Unconjugated
Storage:	Store at -20°C as received.
Stability:	Stable for 12 months from date of receipt.
Gene Name:	oxoglutarate receptor 1
Database Link:	<a href="#">NP_543008</a> <a href="#">Entrez Gene 485527 Dog</a> <a href="#">Entrez Gene 696735 Monkey</a> <a href="#">Entrez Gene 27199 Human</a> <a href="#">Q96P68</a>
Synonyms:	aKGR; GPR80; GPR99; P2RY15; P2Y15
Note:	Specific for Human OXGR1. BLAST analysis of the peptide immunogen showed no homology with other human proteins.
Protein Families:	Druggable Genome, GPCR, Transmembrane



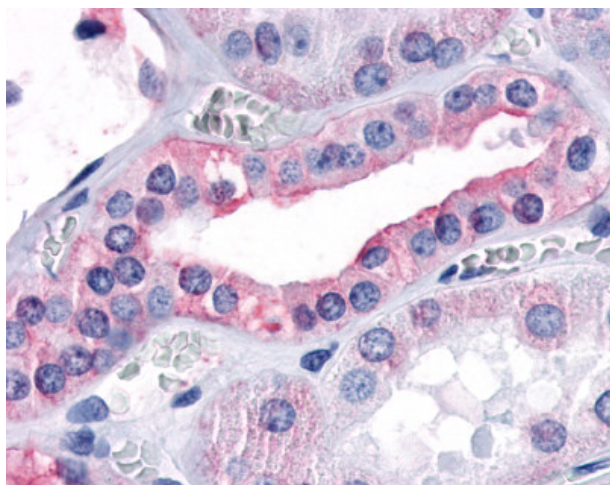
[View online »](#)

**Product images:**

Anti-GPR80 / GPR99 / OXGR1 antibody IHC of human Lung, Non-Small Cell Carcinoma. Immunohistochemistry of formalin-fixed, paraffin-embedded tissue after heat-induced antigen retrieval.



Anti-GPR80 / GPR99 / OXGR1 antibody IHC of human Ovary, Carcinoma. Immunohistochemistry of formalin-fixed, paraffin-embedded tissue after heat-induced antigen retrieval.



Anti-OXGR1 antibody IHC of human kidney. Immunohistochemistry of formalin-fixed, paraffin-embedded tissue after heat-induced antigen retrieval.