

## Product datasheet for **TA317107**

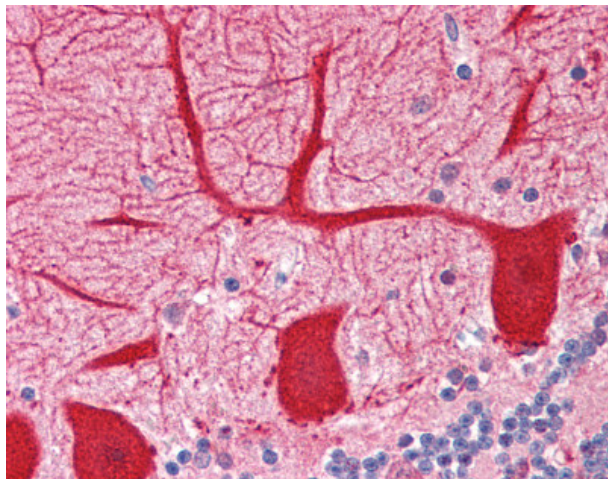
### Optineurin (OPTN) Rabbit Polyclonal Antibody

#### Product data:

Product Type:	Primary Antibodies
Applications:	IHC
Recommended Dilution:	IHC-P (2.5 µg/ml), WB (1:200)
Reactivity:	Bat, Dog, Gorilla, Human, Monkey, Mouse, Rabbit, Rat, Gibbon, Horse, Orang-Utan (Predicted: Hamster)
Host:	Rabbit
Isotype:	IgG
Clonality:	Polyclonal
Immunogen:	OPTN / Optineurin antibody was raised against synthetic peptide corresponding to aa 559-575 (GEVLPDIDTLQIHVMDC) of human, mouse and rat optineurin
Formulation:	TBS, pH 7.4, 0.5 mg/ml BSA, 0.02% sodium azide, 50% glycerol.
Concentration:	lot specific
Purification:	Immunoaffinity Chromatography
Conjugation:	Unconjugated
Storage:	Store at -20°C as received.
Stability:	Stable for 12 months from date of receipt.
Gene Name:	optineurin
Database Link:	<a href="#">NP_068815</a> <a href="#">Entrez Gene 71648 Mouse</a> <a href="#">Entrez Gene 246294 Rat</a> <a href="#">Entrez Gene 478003 Dog</a> <a href="#">Entrez Gene 574252 Monkey</a> <a href="#">Entrez Gene 10133 Human</a> <a href="#">Q96CV9</a>
Synonyms:	ALS12; FIP2; GLC1E; HIP7; HYPL; NRP; TFIIIA-INTP
Note:	Recognizes human, mouse and rat optineurin.
Protein Families:	Druggable Genome



[View online »](#)

**Product images:**

Anti-Optineurin antibody IHC of human brain, cerebellum. Immunohistochemistry of formalin-fixed, paraffin-embedded tissue after heat-induced antigen retrieval. Antibody concentration 5 ug/ml.