

## Product datasheet for **TA317079**

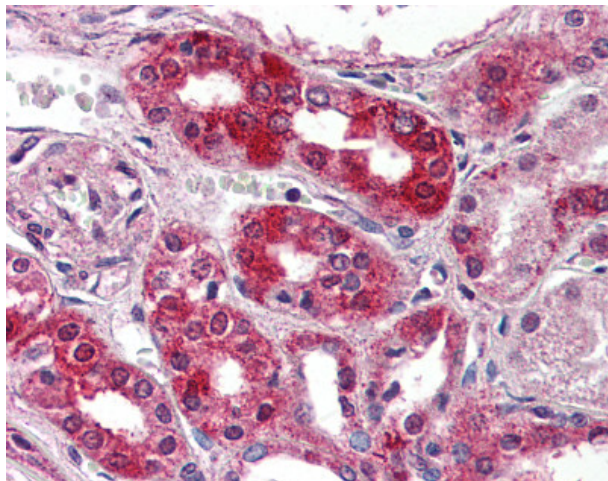
### NPSR1 Rabbit Polyclonal Antibody

#### Product data:

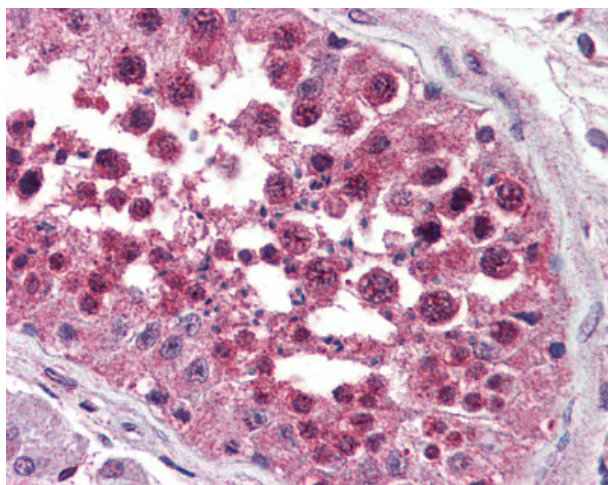
Product Type:	Primary Antibodies
Applications:	IHC
Recommended Dilution:	IHC-P (5 µg/ml)
Reactivity:	Gorilla, Human, Monkey, Mouse, Rat, Gibbon, Hamster (Predicted: Bat, Bovine, Pig, Chicken)
Host:	Rabbit
Isotype:	IgG
Clonality:	Polyclonal
Immunogen:	NPSR1 / NPSR / GPR154 antibody was raised against synthetic 18 amino acid peptide from 2nd extracellular domain of human NPSR1. Percent identity with other species by BLAST analysis: Human, Gorilla, Gibbon, Monkey, Marmoset, Mouse, Rat, Hamster (100%); Elephant, Panda, Bovine, Bat, Pig, Turkey, Chicken (94%); Dog, Opossum, Lizard (89%); Horse, Platypus (83%).
Formulation:	PBS, 0.1% sodium azide.
Concentration:	lot specific
Purification:	Immunoaffinity Chromatography
Conjugation:	Unconjugated
Storage:	Store at -20°C as received.
Stability:	Stable for 12 months from date of receipt.
Gene Name:	neuropeptide S receptor 1
Database Link:	<a href="#">NP_997055</a> <a href="#">Entrez Gene 300458</a> <a href="#">RatEntrez Gene 319239</a> <a href="#">MouseEntrez Gene 574355</a> <a href="#">MonkeyEntrez Gene 387129</a> <a href="#">Human Q6W5P4</a>
Synonyms:	ASRT2; GPR154; GPRA; NPSR; PGR14; VRR1
Note:	Specific for Human NPSR1. BLAST analysis of the peptide immunogen showed no homology with other human proteins.
Protein Families:	Druggable Genome, Transmembrane



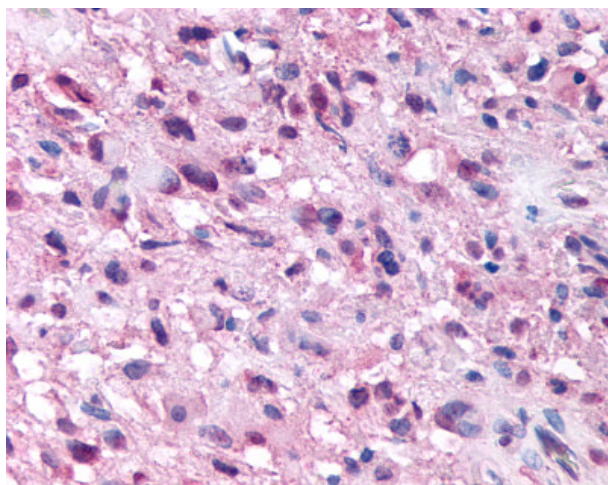
[View online »](#)

**Product images:**

Anti-NPSR1 antibody IHC of human kidney. Immunohistochemistry of formalin-fixed, paraffin-embedded tissue after heat-induced antigen retrieval.



Anti-NPSR1 antibody IHC of human testis. Immunohistochemistry of formalin-fixed, paraffin-embedded tissue after heat-induced antigen retrieval.



Anti-NPSR1 / NPSR / GPR154 antibody IHC of human Brain, Glioblastoma.  
Immunohistochemistry of formalin-fixed, paraffin-embedded tissue after heat-induced antigen retrieval.