

## Product datasheet for **TA316935**

### Integrin alpha 3 (ITGA3) Rabbit Polyclonal Antibody

#### Product data:

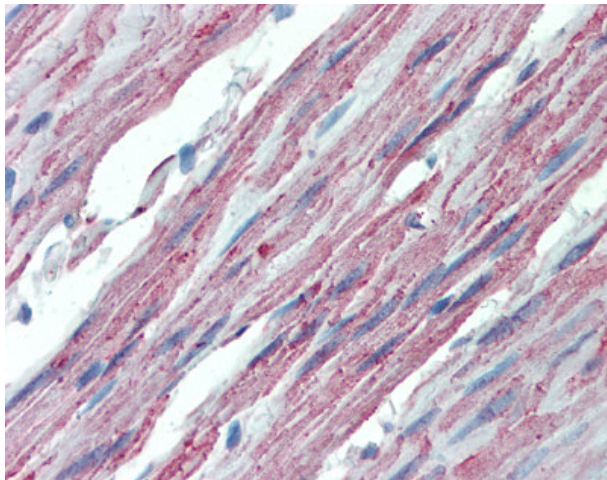
Product Type:	Primary Antibodies
Applications:	IHC
Recommended Dilution:	IHC-P (2.5 - 5 µg/ml)
Reactivity:	Chimpanzee, Gorilla, Human, Monkey, Orang-Utan (Predicted: Hamster, Rabbit, Guinea Pig)
Host:	Rabbit
Isotype:	IgG
Clonality:	Polyclonal
Immunogen:	ITGA3 / CD49c antibody was raised against synthetic 18 amino acid peptide from internal region of human ITGA3 / CD49c. Percent identity with other species by BLAST analysis: Human, Chimpanzee, Gorilla, Orangutan, Monkey (100%); Gibbon, Galago, Hamster, Elephant, Rabbit, Guinea pig (94%); Marmoset, Mouse, Rat, Panda, Bovine, Bat, Horse (89%); Pig (83%).
Formulation:	PBS, 0.1% sodium azide.
Concentration:	lot specific
Purification:	Immunoaffinity Chromatography
Conjugation:	Unconjugated
Storage:	Store at -20°C as received.
Stability:	Stable for 12 months from date of receipt.
Gene Name:	integrin subunit alpha 3
Database Link:	<a href="#">NP_002195</a> <a href="#">Entrez Gene 700962 Monkey</a> <a href="#">Entrez Gene 3675 Human</a> <a href="#">P26006</a>
Synonyms:	CD49C; FRP-2; GAP-B3; GAPB3; ILNEB; MSK18; VCA-2; VL3A; VLA3a
Note:	Specific for Human ITGA3 / CD49c. BLAST analysis of the peptide immunogen showed no homology with other human proteins.
Protein Families:	Druggable Genome, Transmembrane



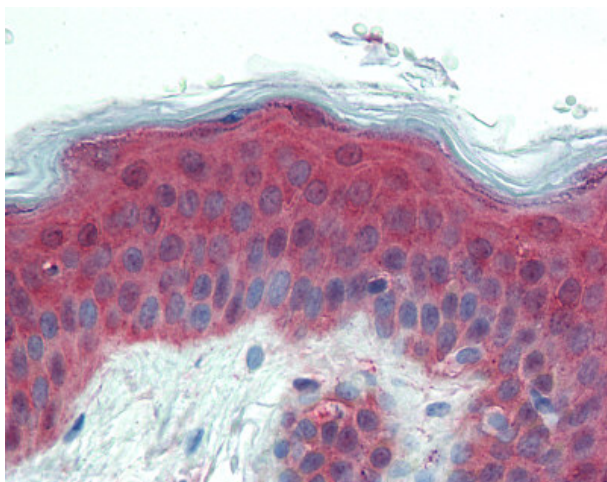
[View online »](#)

**Protein Pathways:**

Arrhythmogenic right ventricular cardiomyopathy (ARVC), Dilated cardiomyopathy, ECM-receptor interaction, Focal adhesion, Hematopoietic cell lineage, Hypertrophic cardiomyopathy (HCM), Pathways in cancer, Regulation of actin cytoskeleton, Small cell lung cancer

**Product images:**

Anti-ITGA3 / CD49c antibody IHC of human colon. Immunohistochemistry of formalin-fixed, paraffin-embedded tissue after heat-induced antigen retrieval.



Anti-ITGA3 / CD49c antibody IHC of human skin. Immunohistochemistry of formalin-fixed, paraffin-embedded tissue after heat-induced antigen retrieval.