

Product datasheet for **TA316681**

DRD2

Product data:

Product Type:	Primary Antibodies
Applications:	IHC
Recommended Dilution:	IHC IHC-P (10 - 20 µg/ml)
Reactivity:	Bat, Bovine, Chimpanzee, Dog, Gorilla, Human, Rabbit, Horse (Predicted: Monkey, Pig)
Host:	Rabbit
Isotype:	IgG
Clonality:	Polyclonal
Immunogen:	Synthetic 16 amino acid peptide from 3rd cytoplasmic domain of human DRD2. Percent identity with other species by BLAST analysis: Human, Chimpanzee, Gorilla, Ferret, Bat, Bovine, Dog, Elephant, Panda, Horse, Rabbit (100%); Gibbon, Monkey, Pig (94%); Marmoset (81%).
Specificity:	Human DRD2. BLAST analysis of the peptide immunogen showed no homology with other human proteins.
Formulation:	PBS, 0.1% Sodium Azide
Concentration:	lot specific
Purification:	Immunoaffinity purified
Conjugation:	Unconjugated
Storage:	Aliquot and store undiluted at -20°C or below for up to 1 year. Can be stored undiluted at 4°C for up to 1 month. Avoid freeze-thaw cycles.
Stability:	12 months from date of despatch
Gene Name:	dopamine receptor D2
Database Link:	NP_000786 Entrez Gene 403701 Dog Entrez Gene 694181 Monkey Entrez Gene 1813 Human P14416



[View online »](#)

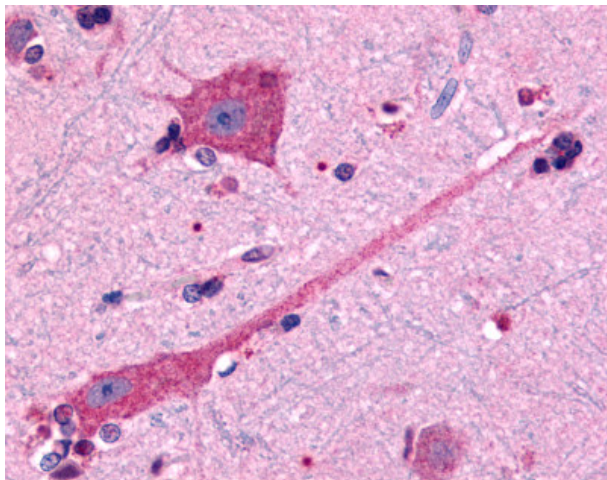
Background: Dopamine Receptor D2 antibody TA316681 is an unconjugated rabbit polyclonal antibody to Dopamine Receptor D2 (DRD2) (Cytoplasmic Domain) from human. It is reactive with human, bat, bovine and other species. Validated for IHC. Tested on 20 paraffin-embedded human tissues.

Synonyms: DRD2, D2R, D(2) dopamine receptor, D2DR

Protein Families: Druggable Genome, GPCR, Transmembrane

Protein Pathways: Gap junction, Neuroactive ligand-receptor interaction

Product images:



Anti-DRD2 antibody IHC of human brain, neurons and glia. Immunohistochemistry of formalin-fixed, paraffin-embedded tissue after heat-induced antigen retrieval.