

Product datasheet for **TA316597**

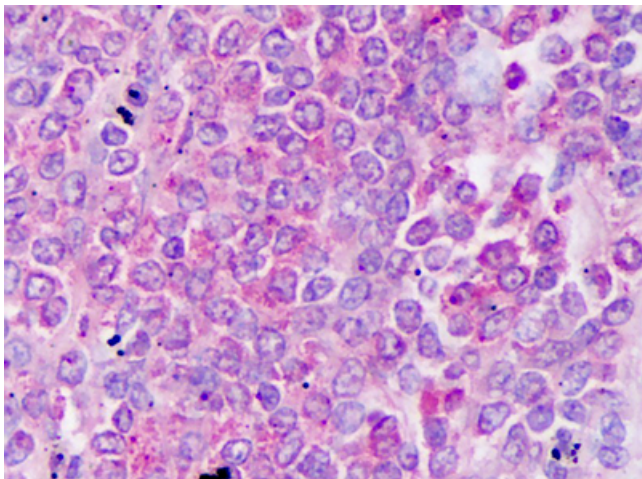
Macrophage Inflammatory Protein 3 alpha (CCL20) Mouse Monoclonal Antibody

Product data:

Product Type:	Primary Antibodies
Applications:	IHC
Recommended Dilution:	ELISA (2 - 4 µg/ml), IHC-P (10 µg/ml), WB (0.2 - 0.4 µg/ml)
Reactivity:	Human
Host:	Mouse
Isotype:	IgG1, kappa
Clonality:	Monoclonal
Immunogen:	CCL20 / MIP-3-Alpha antibody was raised against e.coli derived recombinant Human MIP-3alpha.
Formulation:	Lyophilized from PBS. Sourced in TCS.
Concentration:	lot specific
Purification:	Protein A Column
Conjugation:	Unconjugated
Storage:	Store at -20°C as received.
Stability:	Stable for 12 months from date of receipt.
Gene Name:	C-C motif chemokine ligand 20
Database Link:	NP_004582 Entrez Gene 6364 Human P78556
Synonyms:	CKb4; Exodus; LARC; MIP-3-alpha; MIP-3a; MIP3A; SCYA20; ST38
Note:	Specific for Human MIP-3alpha
Protein Families:	Druggable Genome, Secreted Protein
Protein Pathways:	Chemokine signaling pathway, Cytokine-cytokine receptor interaction



[View online »](#)

Product images:

Anti-CCL20 antibody IHC of human spleen, lymphocytes. Immunohistochemistry of formalin-fixed, paraffin-embedded tissue after heat-induced antigen retrieval. Antibody concentration 10 ug/ml.