

Product datasheet for **TA316322**

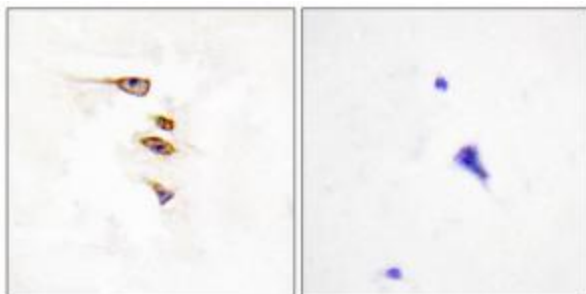
Eph receptor A6 (EPHA6) Rabbit Polyclonal Antibody

Product data:

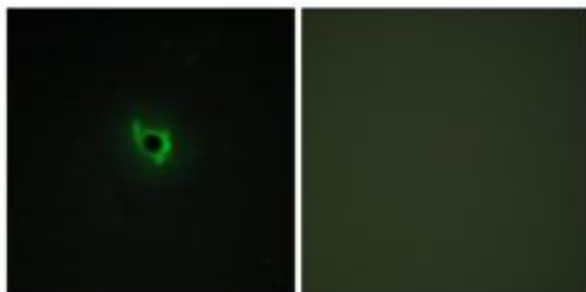
Product Type:	Primary Antibodies
Applications:	IF, IHC
Recommended Dilution:	IHC: 1:50~1:100, IF: 1:100~1:500, ELISA: 1:20000
Reactivity:	Human, Mouse, Rat
Host:	Rabbit
Isotype:	IgG
Clonality:	Polyclonal
Immunogen:	The antiserum was produced against synthesized peptide derived from internal of human EPHA6.
Formulation:	Phosphate buffered saline (without Mg ²⁺ and Ca ²⁺), pH 7.4, 150mM NaCl, 0.02% sodium azide and 50% glycerol.
Concentration:	lot specific
Purification:	The antibody was affinity-purified from rabbit antiserum by affinity-chromatography using epitope-specific immunogen.
Conjugation:	Unconjugated
Storage:	Store at -20°C as received.
Stability:	Stable for 12 months from date of receipt.
Gene Name:	EPH receptor A6
Database Link:	NP_775926 Entrez Gene 13840 MouseEntrez Gene 29202 RatEntrez Gene 285220 Human Q9UF33
Synonyms:	EHK-2; EHK2; EK12; EPA6; HEK12; PRO57066
Note:	EPHA6 antibody detects endogenous levels of total EPHA6 protein.
Protein Families:	Druggable Genome, Protein Kinase, Transmembrane
Protein Pathways:	Axon guidance



[View online »](#)

Product images:

Immunohistochemistry analysis of paraffin-embedded human brain tissue, using EPHA6 antibody. The picture on the right is treated with the synthesized peptide.



Immunofluorescence analysis of COS-7 cells, using EPHA6 antibody. The picture on the right is treated with the synthesized peptide.