

Product datasheet for **TA315637**

ACKR3 Rabbit Polyclonal Antibody

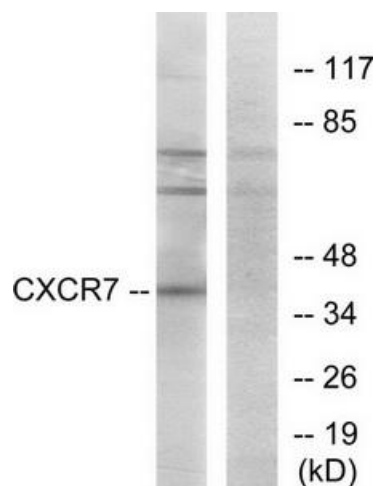
Product data:

Product Type:	Primary Antibodies
Applications:	IF, WB
Recommended Dilution:	WB: 1:500~1:3000, IF: 1:100~1:500, ELISA: 1:1000
Reactivity:	Human, Mouse, Rat
Host:	Rabbit
Isotype:	IgG
Clonality:	Polyclonal
Immunogen:	The antiserum was produced against synthesized peptide derived from C-terminal of human CXCR7.
Formulation:	Phosphate buffered saline (without Mg ²⁺ and Ca ²⁺), pH 7.4, 150mM NaCl, 0.02% sodium azide and 50% glycerol.
Concentration:	lot specific
Purification:	The antibody was affinity-purified from rabbit antiserum by affinity-chromatography using epitope-specific immunogen.
Conjugation:	Unconjugated
Storage:	Store at -20°C as received.
Stability:	Stable for 12 months from date of receipt.
Gene Name:	atypical chemokine receptor 3
Database Link:	NP_064707 Entrez Gene 12778 MouseEntrez Gene 84348 RatEntrez Gene 57007 Human P25106
Synonyms:	CMKOR1; CXC-R7; CXCR-7; CXCR7; GPR159; RDC-1; RDC1
Note:	CXCR7 antibody detects endogenous levels of total CXCR7 protein.
Protein Families:	Druggable Genome, GPCR, Transmembrane



[View online »](#)

Product images:



Western blot analysis of extracts from COS-7 cells, using CXCR7 antibody. The lane on the right is treated with the synthesized peptide.



Immunofluorescence analysis of COS-7 cells, using CXCR7 antibody. The picture on the right is treated with the synthesized peptide.