

Product datasheet for **TA315487**

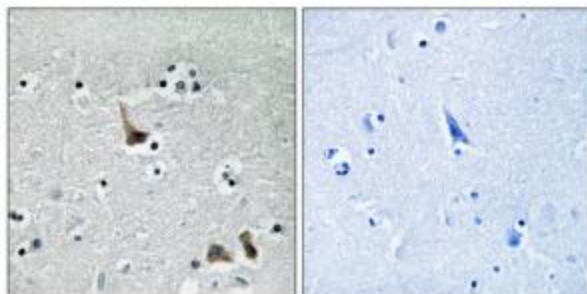
ATP6V1H Rabbit Polyclonal Antibody

Product data:

Product Type:	Primary Antibodies
Applications:	IHC
Recommended Dilution:	IHC: 1:50~1:100, ELISA: 1:20000
Reactivity:	Human, Mouse
Host:	Rabbit
Isotype:	IgG
Clonality:	Polyclonal
Immunogen:	The antiserum was produced against synthesized peptide derived from internal of human ATP6V1H.
Formulation:	Phosphate buffered saline (without Mg ²⁺ and Ca ²⁺), pH 7.4, 150mM NaCl, 0.02% sodium azide and 50% glycerol.
Concentration:	lot specific
Purification:	The antibody was affinity-purified from rabbit antiserum by affinity-chromatography using epitope-specific immunogen.
Conjugation:	Unconjugated
Storage:	Store at -20°C as received.
Stability:	Stable for 12 months from date of receipt.
Gene Name:	ATPase H ⁺ transporting V1 subunit H
Database Link:	NP_057025 Entrez Gene 108664 Mouse Entrez Gene 51606 Human Q9UI12
Synonyms:	CGI-11; MSTP042; NBP1; SFD; SFDalpha; SFDbeta; VMA13
Note:	ATP6V1H antibody detects endogenous levels of total ATP6V1H protein.
Protein Pathways:	Epithelial cell signaling in Helicobacter pylori infection, Lysosome, Metabolic pathways, Oxidative phosphorylation, Vibrio cholerae infection



[View online »](#)

Product images:

Immunohistochemistry analysis of paraffin-embedded human brain tissue using ATP6V1H antibody. The picture on the right is treated with the synthesized peptide.