

Product datasheet for **TA315462**

CYP39A1 Rabbit Polyclonal Antibody

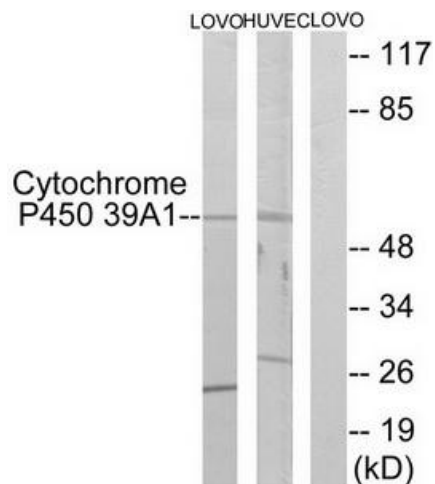
Product data:

Product Type:	Primary Antibodies
Applications:	IF, WB
Recommended Dilution:	WB: 1:500~1:3000, IF: 1:100~1:500, ELISA: 1:10000
Reactivity:	Human, Mouse
Host:	Rabbit
Isotype:	IgG
Clonality:	Polyclonal
Immunogen:	The antiserum was produced against synthesized peptide derived from internal of human Cytochrome P450 39A1.
Formulation:	Phosphate buffered saline (without Mg ²⁺ and Ca ²⁺), pH 7.4, 150mM NaCl, 0.02% sodium azide and 50% glycerol.
Concentration:	lot specific
Purification:	The antibody was affinity-purified from rabbit antiserum by affinity-chromatography using epitope-specific immunogen.
Conjugation:	Unconjugated
Storage:	Store at -20°C as received.
Stability:	Stable for 12 months from date of receipt.
Gene Name:	cytochrome P450 family 39 subfamily A member 1
Database Link:	NP_057677 Entrez Gene 56050 Mouse Entrez Gene 51302 Human Q9NYL5
Synonyms:	39a1 (oxysterol 7alpha-hydroxylase); cytochrome P450; family 39; oxysterol 7-alpha-hydroxylase; oxysterol 7alpha-hydroxylase; polypeptide 1; subfamily a
Note:	Cytochrome P450 39A1 antibody detects endogenous levels of total Cytochrome P450 39A1 protein.
Protein Families:	Druggable Genome, P450, Transmembrane
Protein Pathways:	Primary bile acid biosynthesis

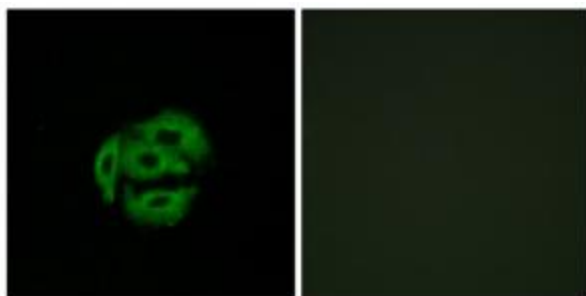


[View online »](#)

Product images:



Western blot analysis of extracts from LOVO cells and HUVEC cells, using Cytochrome P450 39A1 antibody. The lane on the right is treated with the synthesized peptide.



Immunofluorescence analysis of A549 cells, using Cytochrome P450 39A1 antibody. The picture on the right is treated with the synthesized peptide.