

Product datasheet for **TA314837**

WAVE 1 (WASF1) Rabbit Polyclonal Antibody

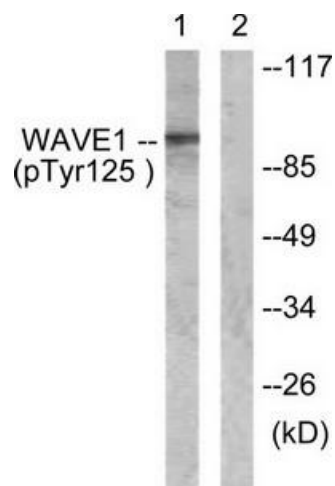
Product data:

Product Type:	Primary Antibodies
Applications:	IHC, WB
Recommended Dilution:	WB: 1:500~1:3000, IHC: 1:50~1:100, ELISA: 1:1000
Reactivity:	Human, Mouse
Modifications:	Phospho-specific
Host:	Rabbit
Isotype:	IgG
Clonality:	Polyclonal
Immunogen:	The antiserum was produced against synthesized phosphopeptide derived from human WAVE1 around the phosphorylation site of tyrosine 125 (E-T-YP-D-V).
Formulation:	Phosphate buffered saline (without Mg ²⁺ and Ca ²⁺), pH 7.4, 150mM NaCl, 0.02% sodium azide and 50% glycerol.
Concentration:	lot specific
Purification:	The antibody was affinity-purified from rabbit antiserum by affinity-chromatography using epitope-specific immunogen.
Conjugation:	Unconjugated
Storage:	Store at -20°C as received.
Stability:	Stable for 12 months from date of receipt.
Gene Name:	WAS protein family member 1
Database Link:	NP_003922 Entrez Gene 83767 Mouse Entrez Gene 8936 Human Q92558
Synonyms:	SCAR1; WAVE; WAVE1
Note:	WAVE1 (Phospho-Tyr125) antibody detects endogenous levels of WAVE1 only when phosphorylated at tyrosine 125.
Protein Families:	Druggable Genome
Protein Pathways:	Adherens junction, Fc gamma R-mediated phagocytosis, Regulation of actin cytoskeleton

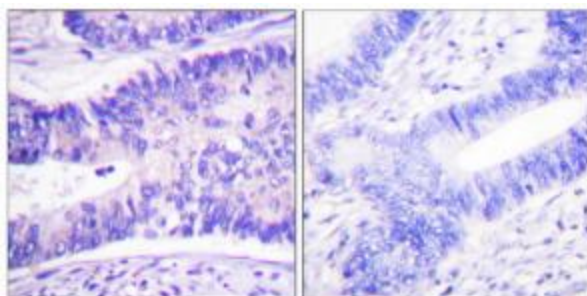


[View online »](#)

Product images:



Western blot analysis of extracts from NIH/3T3 cells, treated with Insulin (0.01U/ml, 15mins), using WAVE1 (Phospho-Tyr125) antibody. The lane on the right is treated with the synthesized peptide.



Immunohistochemistry analysis of paraffin-embedded human colon carcinoma tissue using WAVE1 (Phospho-Tyr125) antibody. The picture on the right is treated with the synthesized peptide.