

Product datasheet for **TA314836**

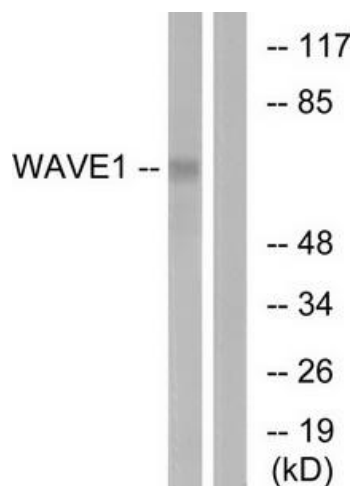
WAVE 1 (WASF1) Rabbit Polyclonal Antibody

Product data:

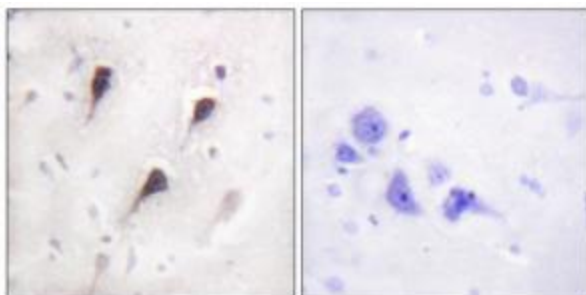
Product Type:	Primary Antibodies
Applications:	IF, IHC, WB
Recommended Dilution:	WB: 1:500~1:3000, IHC: 1:50~1:100, IF: 1:100~1:500, ELISA: 1:40000
Reactivity:	Human, Mouse
Host:	Rabbit
Isotype:	IgG
Clonality:	Polyclonal
Immunogen:	The antiserum was produced against synthesized non-phosphopeptide derived from human WAVE1 around the phosphorylation site of tyrosine 125 (E-T-YP-D-V).
Formulation:	Phosphate buffered saline (without Mg ²⁺ and Ca ²⁺), pH 7.4, 150mM NaCl, 0.02% sodium azide and 50% glycerol.
Concentration:	lot specific
Purification:	The antibody was affinity-purified from rabbit antiserum by affinity-chromatography using epitope-specific immunogen.
Conjugation:	Unconjugated
Storage:	Store at -20°C as received.
Stability:	Stable for 12 months from date of receipt.
Gene Name:	WAS protein family member 1
Database Link:	NP_001020105 Entrez Gene 83767 Mouse Entrez Gene 8936 Human Q92558
Synonyms:	SCAR1; WAVE; WAVE1
Note:	WAVE1 (Ab-125) antibody detects endogenous levels of total WAVE1 protein.
Protein Families:	Druggable Genome
Protein Pathways:	Adherens junction, Fc gamma R-mediated phagocytosis, Regulation of actin cytoskeleton



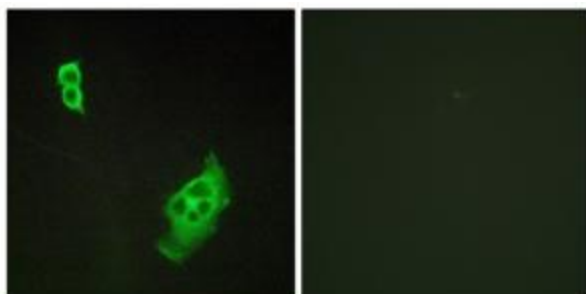
[View online »](#)

Product images:

Western blot analysis of extracts from 293 cells, treated with insulin (0.01U/ml, 15mins), using WAVE1 (Ab-125) antibody. The lane on the right is treated with the synthesized peptide.



Immunohistochemistry analysis of paraffin-embedded human brain tissue using WAVE1 (Ab-125) antibody. The picture on the right is treated with the synthesized peptide.



Immunofluorescence analysis of COS-7 cells, using NFAT3 (Ab-676) antibody. The picture on the right is treated with the synthesized peptide.