

## Product datasheet for **TA314819**

### p35 (CDK5R1) Rabbit Polyclonal Antibody

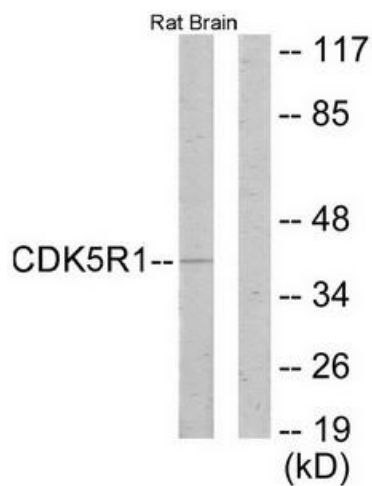
#### Product data:

Product Type:	Primary Antibodies
Applications:	IF, WB
Recommended Dilution:	WB: 1:500~1:3000, IF: 1:100~1:500, ELISA: 1:20000
Reactivity:	Human, Mouse, Rat
Host:	Rabbit
Isotype:	IgG
Clonality:	Polyclonal
Immunogen:	The antiserum was produced against synthesized peptide derived from internal of human CDK5R1.
Formulation:	Phosphate buffered saline (without Mg <sup>2+</sup> and Ca <sup>2+</sup> ), pH 7.4, 150mM NaCl, 0.02% sodium azide and 50% glycerol.
Concentration:	lot specific
Purification:	The antibody was affinity-purified from rabbit antiserum by affinity-chromatography using epitope-specific immunogen.
Conjugation:	Unconjugated
Storage:	Store at -20°C as received.
Stability:	Stable for 12 months from date of receipt.
Gene Name:	cyclin-dependent kinase 5 regulatory subunit 1
Database Link:	<a href="#">NP_003876</a> <a href="#">Entrez Gene 12569 MouseEntrez Gene 116671 RatEntrez Gene 8851 Human Q15078</a>
Synonyms:	CDK5P35; CDK5R; NCK5A; p23; p25; p35; p35nck5a
Note:	CDK5R1 antibody detects endogenous levels of total CDK5R1 protein.
Protein Families:	Druggable Genome
Protein Pathways:	Alzheimer's disease

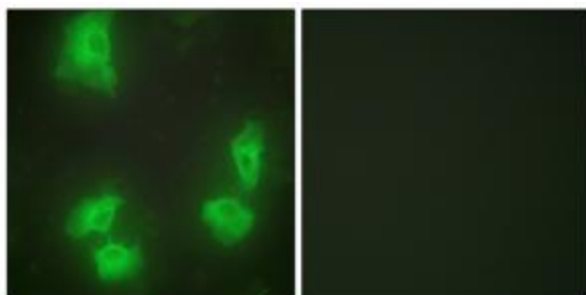


[View online »](#)

## Product images:



Western blot analysis of extracts from rat brain cells, using CDK5R1 antibody. The lane on the right is treated with the synthesized peptide.



Immunofluorescence analysis of HeLa cells, using CDK5R1 antibody. The picture on the right is treated with the synthesized peptide.