

Product datasheet for **TA314730**

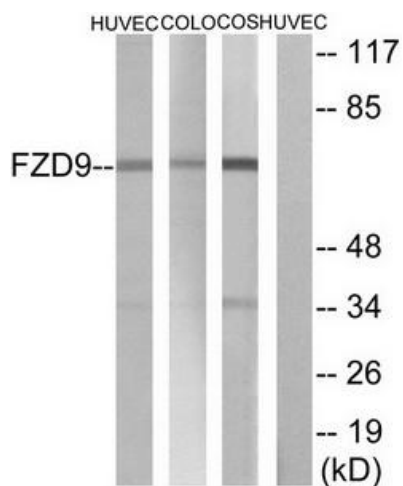
Frizzled 9 (FZD9) Rabbit Polyclonal Antibody

Product data:

Product Type:	Primary Antibodies
Applications:	IF, WB
Recommended Dilution:	WB: 1:500~1:3000, IF: 1:100~1:500, ELISA: 1:20000
Reactivity:	Human, Mouse
Host:	Rabbit
Isotype:	IgG
Clonality:	Polyclonal
Immunogen:	The antiserum was produced against synthesized peptide derived from C-terminal of human FZD9.
Formulation:	Phosphate buffered saline (without Mg ²⁺ and Ca ²⁺), pH 7.4, 150mM NaCl, 0.02% sodium azide and 50% glycerol.
Concentration:	lot specific
Purification:	The antibody was affinity-purified from rabbit antiserum by affinity-chromatography using epitope-specific immunogen.
Conjugation:	Unconjugated
Storage:	Store at -20°C as received.
Stability:	Stable for 12 months from date of receipt.
Gene Name:	frizzled class receptor 9
Database Link:	NP_003499 Entrez Gene 14371 Mouse Entrez Gene 8326 Human O00144
Synonyms:	CD349; FZD3
Note:	FZD9 antibody detects endogenous levels of total FZD9 protein.
Protein Families:	Druggable Genome, GPCR, Transmembrane
Protein Pathways:	Basal cell carcinoma, Colorectal cancer, Melanogenesis, Pathways in cancer, Wnt signaling pathway



[View online »](#)

Product images:


Western blot analysis of extracts from HUVEC cells, COLO cells, and COS cells, using FZD9 antibody. The lane on the right is treated with the synthesized peptide.



Immunofluorescence analysis of A549 cells, using FZD9 antibody. The picture on the right is treated with the synthesized peptide.