

Product datasheet for **TA314677**

14-3-3 zeta (YWHAZ) Rabbit Polyclonal Antibody

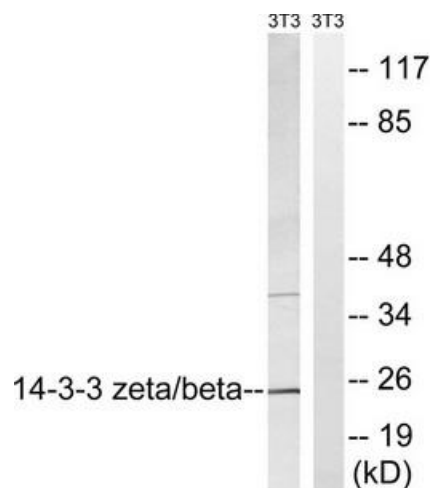
Product data:

Product Type:	Primary Antibodies
Applications:	WB
Recommended Dilution:	WB: 1:500~1:3000, ELISA: 1:20000
Reactivity:	Human, Mouse, Rat
Host:	Rabbit
Isotype:	IgG
Clonality:	Polyclonal
Immunogen:	The antiserum was produced against synthesized non-phosphopeptide derived from human 14-3-3 β ? around the phosphorylation site of serine 184/186 (L-N-SP-P-E).
Formulation:	Phosphate buffered saline (without Mg ²⁺ and Ca ²⁺), pH 7.4, 150mM NaCl, 0.02% sodium azide and 50% glycerol.
Concentration:	lot specific
Purification:	The antibody was affinity-purified from rabbit antiserum by affinity-chromatography using epitope-specific immunogen.
Conjugation:	Unconjugated
Storage:	Store at -20°C as received.
Stability:	Stable for 12 months from date of receipt.
Gene Name:	tyrosine 3-monooxygenase/tryptophan 5-monooxygenase activation protein zeta
Database Link:	NP_001129171 Entrez Gene 22631 Mouse Entrez Gene 25578 Rat Entrez Gene 7534 Human P63104
Synonyms:	14-3-3-zeta; HEL-S-3; HEL4; KCIP-1; YWHAD
Note:	14-3-3 ./. (Ab-184/186) antibody detects endogenous levels of total 14-3-3 ./. protein.
Protein Pathways:	Cell cycle, Neurotrophin signaling pathway, Oocyte meiosis, Pathogenic Escherichia coli infection



[View online »](#)

Product images:



Western blot analysis of extracts from 3T3 cells, using 14-3-3 β/γ (Ab-184/186) antibody. The lane on the right is treated with the synthesized peptide.