

## Product datasheet for **TA314617**

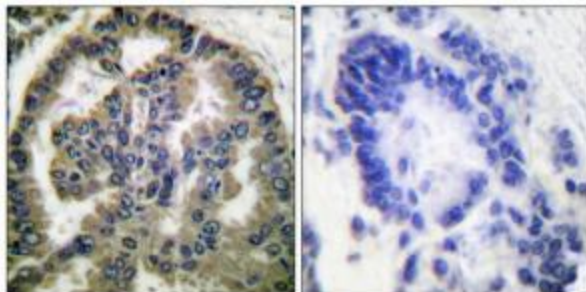
### TGF beta 2 (TGFB2) Rabbit Polyclonal Antibody

#### Product data:

Product Type:	Primary Antibodies
Applications:	IHC
Recommended Dilution:	IHC: 1:50~1:100, ELISA: 1:5000
Reactivity:	Human, Mouse, Rat
Host:	Rabbit
Isotype:	IgG
Clonality:	Polyclonal
Immunogen:	The antiserum was produced against synthesized peptide derived from human TGF $\beta$ 2.
Formulation:	Phosphate buffered saline (without Mg <sup>2+</sup> and Ca <sup>2+</sup> ), pH 7.4, 150mM NaCl, 0.02% sodium azide and 50% glycerol.
Concentration:	lot specific
Purification:	The antibody was affinity-purified from rabbit antiserum by affinity-chromatography using epitope-specific immunogen.
Conjugation:	Unconjugated
Storage:	Store at -20°C as received.
Stability:	Stable for 12 months from date of receipt.
Gene Name:	transforming growth factor beta 2
Database Link:	<a href="#">NP_003229</a> <a href="#">Entrez Gene 21808 Mouse</a> <a href="#">Entrez Gene 81809 Rat</a> <a href="#">Entrez Gene 7042 Human</a> <a href="#">P61812</a>
Synonyms:	G-TSF; LDS4; TGF-beta2
Note:	TGF .2 antibody detects endogenous levels of total TGF .2 protein.
Protein Families:	Druggable Genome, Secreted Protein, Transmembrane
Protein Pathways:	Cell cycle, Chronic myeloid leukemia, Colorectal cancer, Cytokine-cytokine receptor interaction, Dilated cardiomyopathy, Hypertrophic cardiomyopathy (HCM), MAPK signaling pathway, Pancreatic cancer, Pathways in cancer, Renal cell carcinoma, TGF-beta signaling pathway



[View online »](#)

**Product images:**

Immunohistochemical analysis of paraffin-embedded human lung carcinoma tissue, using TGF  $\beta$ 2 antibody. The picture on the right is treated with the synthesized peptide.