

Product datasheet for **TA314525**

SFRS8 (SFSWAP) Rabbit Polyclonal Antibody

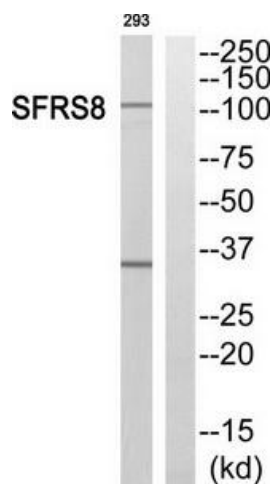
Product data:

Product Type:	Primary Antibodies
Applications:	WB
Recommended Dilution:	WB: 1:500~1:3000, ELISA: 1:20000, References:
Reactivity:	Human
Host:	Rabbit
Isotype:	IgG
Clonality:	Polyclonal
Immunogen:	The antiserum was produced against synthesized peptide derived from internal of human SFRS8.
Formulation:	Phosphate buffered saline (without Mg ²⁺ and Ca ²⁺), pH 7.4, 150mM NaCl, 0.02% sodium azide and 50% glycerol.
Concentration:	lot specific
Purification:	The antibody was affinity-purified from rabbit antiserum by affinity-chromatography using epitope-specific immunogen.
Conjugation:	Unconjugated
Storage:	Store at -20°C as received.
Stability:	Stable for 12 months from date of receipt.
Gene Name:	splicing factor SWAP homolog
Database Link:	NP_689421 Entrez Gene 6433 Human Q12872
Synonyms:	arginine; Drosophila); Drosophila homolog); MGC167082; serine-rich 8; serine-rich 8 (suppressor-of-white-apricot; serine-rich 8 (suppressor-of-white-apricot homolog; splicing factor; SWAP
Note:	SFRS8 antibody detects endogenous levels of total SFRS8 protein.
Protein Families:	Transcription Factors



[View online »](#)

Product images:



Western blot analysis of extracts from 293 cells, using SFRS8 antibody. The lane on the right is treated with the synthesized peptide.