

Product datasheet for **TA314482**

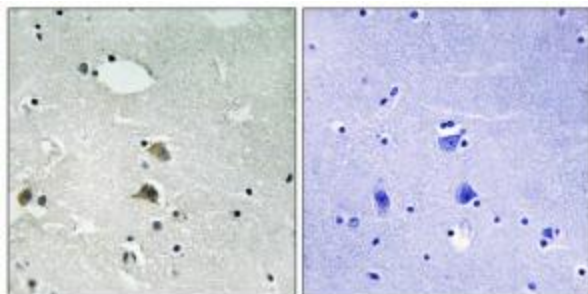
RPS6 Rabbit Polyclonal Antibody

Product data:

Product Type:	Primary Antibodies
Applications:	IHC
Recommended Dilution:	IHC: 1:50~1:100, ELISA: 1:40000
Reactivity:	Human, Mouse, Rat
Host:	Rabbit
Isotype:	IgG
Clonality:	Polyclonal
Immunogen:	The antiserum was produced against synthesized peptide derived from Internal of human S6 Ribosomal Protein.
Formulation:	Phosphate buffered saline (without Mg ²⁺ and Ca ²⁺), pH 7.4, 150mM NaCl, 0.02% sodium azide and 50% glycerol.
Concentration:	lot specific
Purification:	The antibody was affinity-purified from rabbit antiserum by affinity-chromatography using epitope-specific immunogen.
Conjugation:	Unconjugated
Storage:	Store at -20°C as received.
Stability:	Stable for 12 months from date of receipt.
Gene Name:	ribosomal protein S6
Database Link:	NP_001001 Entrez Gene 20104 Mouse Entrez Gene 29304 Rat Entrez Gene 6194 Human P62753
Synonyms:	S6
Note:	S6 Ribosomal Protein antibody detects endogenous levels of total S6 Ribosomal Protein protein.
Protein Pathways:	Insulin signaling pathway, mTOR signaling pathway, Ribosome



[View online »](#)

Product images:

Immunohistochemistry analysis of paraffin-embedded human brain tissue using S6 Ribosomal Protein antibody. The picture on the right is treated with the synthesized peptide.