

Product datasheet for **TA314354**

PML Protein (PML) Rabbit Polyclonal Antibody

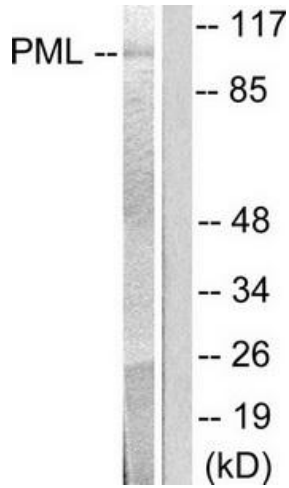
Product data:

Product Type:	Primary Antibodies
Applications:	IF, IHC, WB
Recommended Dilution:	WB: 1:500~1:3000, IHC: 1:50~1:100, IF: 1:100~1:500, ELISA: 1:10000
Reactivity:	Human
Host:	Rabbit
Isotype:	IgG
Clonality:	Polyclonal
Immunogen:	The antiserum was produced against synthesized peptide derived from human PML.
Formulation:	Phosphate buffered saline (without Mg ²⁺ and Ca ²⁺), pH 7.4, 150mM NaCl, 0.02% sodium azide and 50% glycerol.
Concentration:	lot specific
Purification:	The antibody was affinity-purified from rabbit antiserum by affinity-chromatography using epitope-specific immunogen.
Conjugation:	Unconjugated
Storage:	Store at -20°C as received.
Stability:	Stable for 12 months from date of receipt.
Gene Name:	promyelocytic leukemia
Database Link:	NP_002666 Entrez Gene 5371 Human P29590
Synonyms:	MYL; PP8675; RNF71; TRIM19
Note:	PML antibody detects endogenous levels of total PML protein.
Protein Families:	Druggable Genome, Transcription Factors
Protein Pathways:	Acute myeloid leukemia, Pathways in cancer, Ubiquitin mediated proteolysis

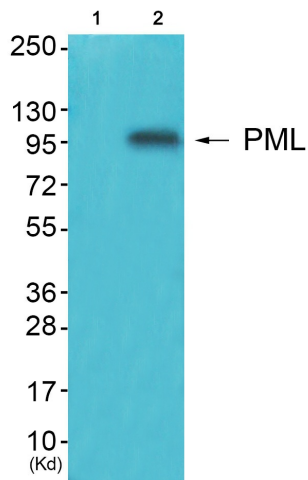


[View online »](#)

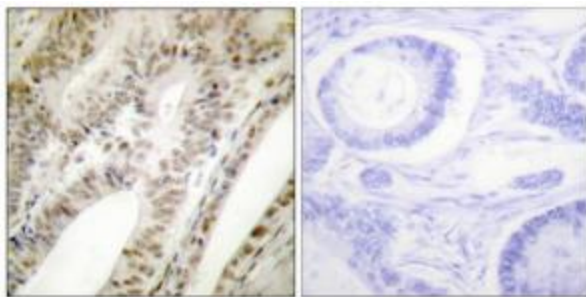
Product images:



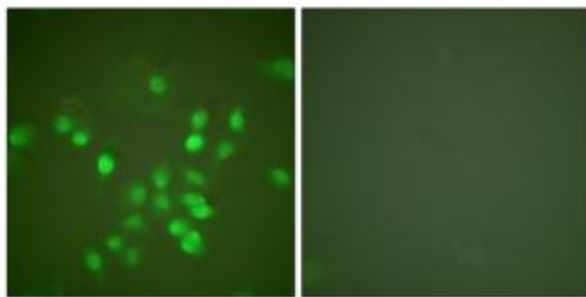
Western blot analysis of extracts from A549 cells, using PML antibody (#TA314354). The lane on the right is treated with the synthesized peptide.



Western blot analysis of extracts from JK cells (Lane 2), using PML Antibody. The lane on the left is treated with synthesized peptide.



Immunohistochemical analysis of paraffin-embedded human tonsil tissue using PML antibody (#TA314354). The picture on the right is treated with the synthesized peptide.



Immunofluorescence analysis of A549 cells, using PML antibody (#TA314354). The picture on the right is treated with the synthesized peptide.