

## Product datasheet for **TA314235**

### NDUFA4 Rabbit Polyclonal Antibody

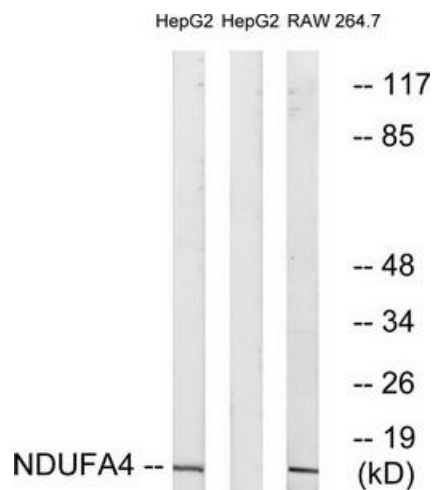
#### Product data:

Product Type:	Primary Antibodies
Applications:	WB
Recommended Dilution:	WB: 1:500~1:3000, ELISA: 1:10000
Reactivity:	Human, Mouse, Rat
Host:	Rabbit
Isotype:	IgG
Clonality:	Polyclonal
Immunogen:	The antiserum was produced against synthesized peptide derived from internal of human NDUFA4.
Formulation:	Phosphate buffered saline (without Mg <sup>2+</sup> and Ca <sup>2+</sup> ), pH 7.4, 150mM NaCl, 0.02% sodium azide and 50% glycerol.
Concentration:	lot specific
Purification:	The antibody was affinity-purified from rabbit antiserum by affinity-chromatography using epitope-specific immunogen.
Conjugation:	Unconjugated
Storage:	Store at -20°C as received.
Stability:	Stable for 12 months from date of receipt.
Gene Name:	NDUFA4, mitochondrial complex associated
Database Link:	<a href="#">NP_002480</a> <a href="#">Entrez Gene 17992 MouseEntrez Gene 681024 RatEntrez Gene 4697 Human O00483</a>
Synonyms:	CI-9k; CI-MLRQ; MLRQ
Note:	NDUFA4 antibody detects endogenous levels of total NDUFA4 protein.
Protein Families:	Transmembrane
Protein Pathways:	Alzheimer's disease, Huntington's disease, Metabolic pathways, Oxidative phosphorylation, Parkinson's disease



[View online »](#)

## Product images:



Western blot analysis of extracts from HepG2 cells and RAW264.7 cells, using NDUFA4 antibody. The lane on the right is treated with the synthesized peptide.