

Product datasheet for **TA314173**

MAK Rabbit Polyclonal Antibody

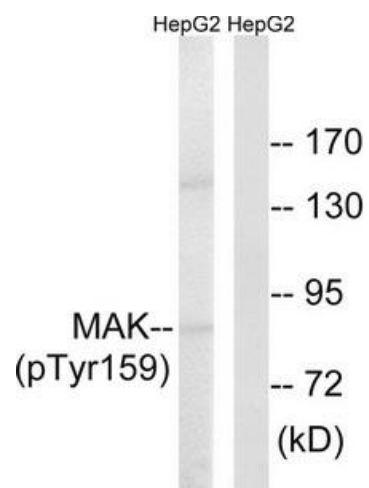
Product data:

Product Type:	Primary Antibodies
Applications:	WB
Recommended Dilution:	WB: 1:500~1:3000, ELISA: 1:40000
Reactivity:	Human, Mouse, Rat
Modifications:	Phospho-specific
Host:	Rabbit
Isotype:	IgG
Clonality:	Polyclonal
Immunogen:	The antiserum was produced against synthesized phosphopeptide derived from human MAK around the phosphorylation site of tyrosine 159 (T-D-YP-V-S).
Formulation:	Phosphate buffered saline (without Mg ²⁺ and Ca ²⁺), pH 7.4, 150mM NaCl, 0.02% sodium azide and 50% glycerol.
Concentration:	lot specific
Purification:	The antibody was affinity-purified from rabbit antiserum by affinity-chromatography using epitope-specific immunogen.
Conjugation:	Unconjugated
Storage:	Store at -20°C as received.
Stability:	Stable for 12 months from date of receipt.
Gene Name:	male germ cell associated kinase
Database Link:	NP_005897 Entrez Gene 17152 Mouse Entrez Gene 25677 Rat Entrez Gene 4117 Human P20794
Synonyms:	dj417M14.2; RP62
Note:	MAK (Phospho-Tyr159) antibody detects endogenous levels of MAK only when phosphorylated at tyrosine 159.
Protein Families:	Druggable Genome, Protein Kinase



[View online »](#)

Product images:



Western blot analysis of extracts from HepG2 cells, treated with PMA (125ng/ml, 30mins), using MAK (Phospho-Tyr159) antibody. The lane on the right is treated with the synthesized peptide.