

Product datasheet for **TA314107**

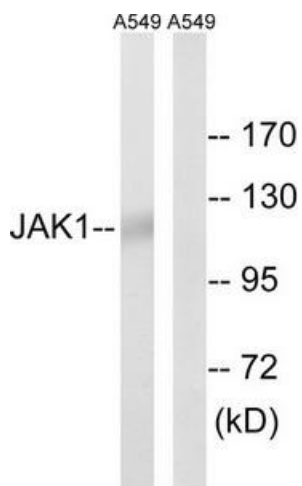
JAK1 Rabbit Polyclonal Antibody

Product data:

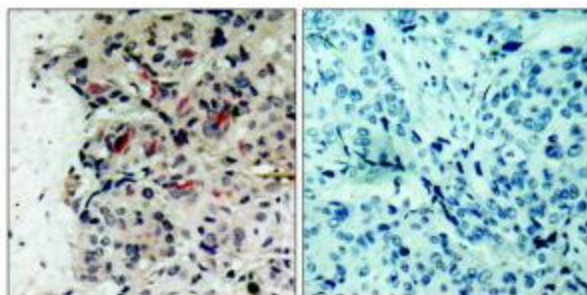
Product Type:	Primary Antibodies
Applications:	IHC, WB
Recommended Dilution:	WB: 1:500~1:3000, IHC: 1:50~1:100, ELISA: 1:10000
Reactivity:	Human, Mouse, Rat
Host:	Rabbit
Isotype:	IgG
Clonality:	Polyclonal
Immunogen:	The antiserum was produced against synthesized phosphopeptide derived from human JAK1 around the phosphorylation site of tyrosine 1022.
Formulation:	Phosphate buffered saline (without Mg ²⁺ and Ca ²⁺), pH 7.4, 150mM NaCl, 0.02% sodium azide and 50% glycerol.
Concentration:	lot specific
Purification:	The antibody was affinity-purified from rabbit antiserum by affinity-chromatography using epitope-specific immunogen.
Conjugation:	Unconjugated
Storage:	Store at -20°C as received.
Stability:	Stable for 12 months from date of receipt.
Gene Name:	Janus kinase 1
Database Link:	NP_002218 Entrez Gene 16451 Mouse Entrez Gene 84598 Rat Entrez Gene 3716 Human P23458
Synonyms:	JAK1A; JAK1B; JTK3
Note:	JAK1 (Ab-1022) antibody detects endogenous levels of total JAK1 protein.
Protein Families:	Druggable Genome, Protein Kinase
Protein Pathways:	Jak-STAT signaling pathway, Pancreatic cancer, Pathways in cancer



[View online »](#)

Product images:

Western blot analysis of extracts from A549, using JAK1 (Ab-1022) Antibody. The lane on the right is treated with the synthesized peptide.



Immunohistochemistry analysis of paraffin-embedded human breast carcinoma tissue, using JAK1 (Ab-1022) Antibody. The picture on the right is treated with the synthesized peptide.