

Product datasheet for **TA314095**

CD51 (ITGAV) Rabbit Polyclonal Antibody

Product data:

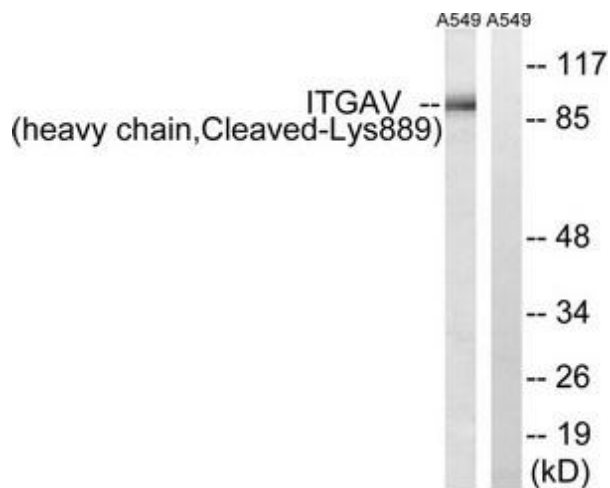
Product Type:	Primary Antibodies
Applications:	WB
Recommended Dilution:	WB: 1:500~1:3000, ELISA: 1:10000
Reactivity:	Human
Host:	Rabbit
Isotype:	IgG
Clonality:	Polyclonal
Immunogen:	The antiserum was produced against synthesized peptide derived from human ITGAV.
Formulation:	Phosphate buffered saline (without Mg ²⁺ and Ca ²⁺), pH 7.4, 150mM NaCl, 0.02% sodium azide and 50% glycerol.
Concentration:	lot specific
Purification:	The antibody was affinity-purified from rabbit antiserum by affinity-chromatography using epitope-specific immunogen.
Conjugation:	Unconjugated
Storage:	Store at -20°C as received.
Stability:	Stable for 12 months from date of receipt.
Gene Name:	integrin subunit alpha V
Database Link:	NP_001138471 Entrez Gene 3685 Human P06756
Synonyms:	CD51; MSK8; VNRA; VTNR
Note:	ITGAV (heavy chain, Cleaved-Lys889) antibody detects endogenous levels of fragment of activated ITGAV resulting from cleavage adjacent to Lys889.
Protein Families:	Druggable Genome, ES Cell Differentiation/IPS, Transmembrane



[View online »](#)

Protein Pathways:

Arrhythmogenic right ventricular cardiomyopathy (ARVC), Cell adhesion molecules (CAMs), Dilated cardiomyopathy, ECM-receptor interaction, Focal adhesion, Hypertrophic cardiomyopathy (HCM), Pathways in cancer, Regulation of actin cytoskeleton, Small cell lung cancer

Product images:

Western blot analysis of extracts from A549 cells, treated with etoposide (25uM, 1 hour), using ITGAV (heavy chain, Cleaved-Lys889) antibody. The lane on the right is treated with the synthesized peptide.