

## Product datasheet for **TA313882**

### Filamin A (FLNA) Rabbit Polyclonal Antibody

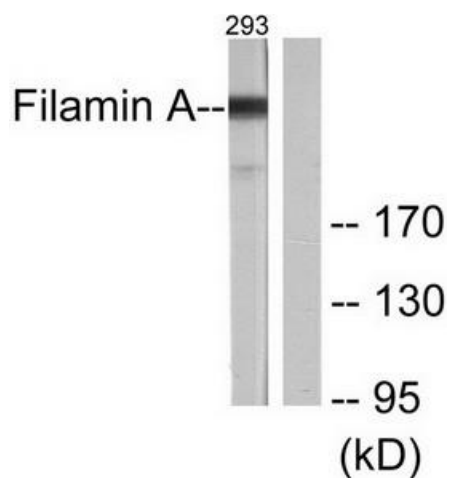
#### Product data:

Product Type:	Primary Antibodies
Applications:	WB
Recommended Dilution:	WB: 1:500~1:3000, ELISA: 1:10000
Reactivity:	Human, Mouse, Rat
Host:	Rabbit
Isotype:	IgG
Clonality:	Polyclonal
Immunogen:	The antiserum was produced against synthesized non-phosphopeptide derived from human Filamin A around the phosphorylation site of serine 2152 (A-P-SP-V-A).
Formulation:	Phosphate buffered saline (without Mg <sup>2+</sup> and Ca <sup>2+</sup> ), pH 7.4, 150mM NaCl, 0.02% sodium azide and 50% glycerol.
Concentration:	lot specific
Purification:	The antibody was affinity-purified from rabbit antiserum by affinity-chromatography using epitope-specific immunogen.
Conjugation:	Unconjugated
Storage:	Store at -20°C as received.
Stability:	Stable for 12 months from date of receipt.
Gene Name:	filamin A
Database Link:	<a href="#">NP_001104026</a> <a href="#">Entrez Gene 192176 MouseEntrez Gene 293860 RatEntrez Gene 2316 Human P21333</a>
Synonyms:	ABP-280; ABPX; CSBS; CVD1; FLN; FLN-A; FLN1; FMD; MNS; NHBP; OPD; OPD1; OPD2; XLVD; XMVD
Note:	Filamin A (Ab-2152) antibody detects endogenous levels of total Filamin A protein.
Protein Pathways:	Focal adhesion, MAPK signaling pathway



[View online »](#)

## Product images:



Western blot analysis of extracts from 293 cells treated with EGF (200ng/ml, 5mins), using Filamin A (Ab-2152) antibody (#TA313882, Line 1 and 2). The lane on the right is treated with the synthesized peptide.