

## Product datasheet for **TA313880**

### FLI1 Rabbit Polyclonal Antibody

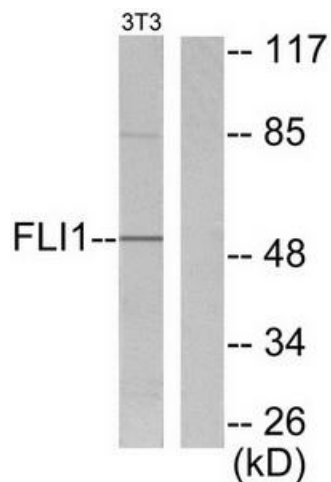
#### Product data:

Product Type:	Primary Antibodies
Applications:	IHC, WB
Recommended Dilution:	WB: 1:500~1:1000, IHC: 1:50~1:100, ELISA: 1:10000
Reactivity:	Human, Mouse
Host:	Rabbit
Isotype:	IgG
Clonality:	Polyclonal
Immunogen:	The antiserum was produced against synthesized peptide derived from human FLI1.
Formulation:	Phosphate buffered saline (without Mg <sup>2+</sup> and Ca <sup>2+</sup> ), pH 7.4, 150mM NaCl, 0.02% sodium azide and 50% glycerol.
Concentration:	lot specific
Purification:	The antibody was affinity-purified from rabbit antiserum by affinity-chromatography using epitope-specific immunogen.
Conjugation:	Unconjugated
Storage:	Store at -20°C as received.
Stability:	Stable for 12 months from date of receipt.
Gene Name:	Fli-1 proto-oncogene, ETS transcription factor
Database Link:	<a href="#">NP_001161153</a> <a href="#">Entrez Gene 14247 Mouse</a> <a href="#">Entrez Gene 2313 Human</a> <a href="#">Q01543</a>
Synonyms:	EWSR2; SIC-1
Note:	FLI1 antibody detects endogenous levels of total FLI1 protein.
Protein Families:	Transcription Factors

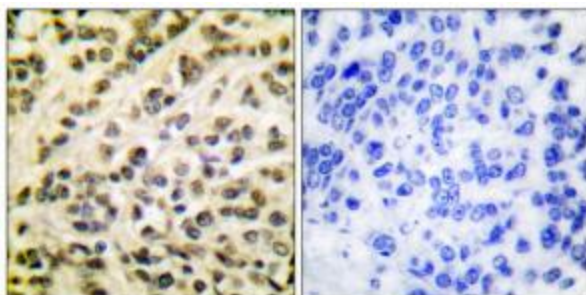


[View online »](#)

## Product images:



Western blot analysis of extracts from NIH/3T3 cells, using FLI1 antibody (#TA313880). The lane on the right is treated with the synthesized peptide.



Immunohistochemical analysis of paraffin-embedded human breast carcinoma tissue using FLI1 antibody (#TA313880). The picture on the right is treated with the synthesized peptide.