

Product datasheet for **TA313767**

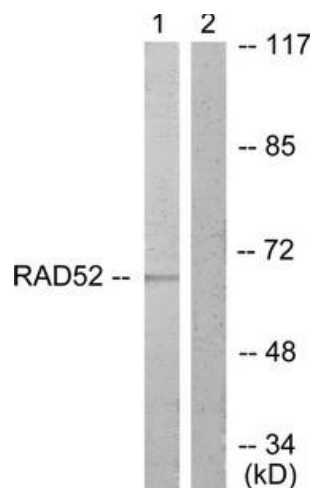
CRMP2 (DPYSL2) Rabbit Polyclonal Antibody

Product data:

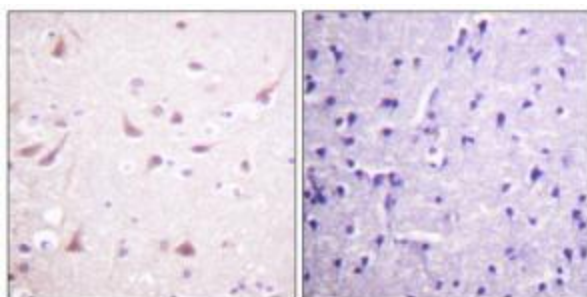
Product Type:	Primary Antibodies
Applications:	IF, IHC, WB
Recommended Dilution:	WB: 1:500~1:3000, IHC: 1:50~1:100, IF: 1:100~1:500, ELISA: 1:1000
Reactivity:	Human, Mouse, Rat
Host:	Rabbit
Isotype:	IgG
Clonality:	Polyclonal
Immunogen:	The antiserum was produced against synthesized non-phosphopeptide derived from human DRP-2 around the phosphorylation site of threonine 514 (T-V-TP-P-A).
Formulation:	Phosphate buffered saline (without Mg ²⁺ and Ca ²⁺), pH 7.4, 150mM NaCl, 0.02% sodium azide and 50% glycerol.
Concentration:	lot specific
Purification:	The antibody was affinity-purified from rabbit antiserum by affinity-chromatography using epitope-specific immunogen.
Conjugation:	Unconjugated
Storage:	Store at -20°C as received.
Stability:	Stable for 12 months from date of receipt.
Gene Name:	dihydropyrimidinase like 2
Database Link:	NP_001184222 Entrez Gene 12934 Mouse Entrez Gene 25416 Rat Entrez Gene 1808 Human Q16555
Synonyms:	CRMP-2; CRMP2; DHPRP2; DRP-2; DRP2; N2A3; ULIP-2; ULIP2
Note:	DRP-2 (Ab-514) antibody detects endogenous levels of total DRP-2 protein.
Protein Families:	Druggable Genome
Protein Pathways:	Axon guidance



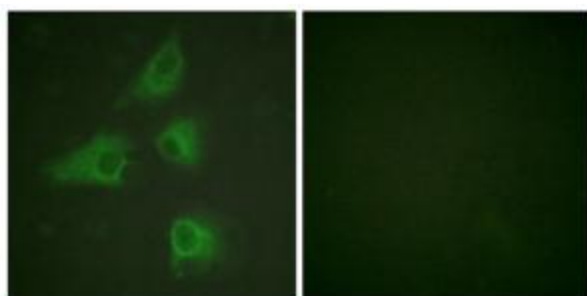
[View online »](#)

Product images:


Western blot analysis of extracts from A549 cells, treated with EGF (200ng/ml, 30mins), using DRP-2 (Ab-514) antibody. The lane on the right is treated with the synthesized peptide.



Immunohistochemistry analysis of paraffin-embedded human brain tissue using DRP-2 (Ab-514) antibody. The picture on the right is treated with the synthesized peptide.



Immunofluorescence analysis of HeLa cells, using DRP-2 (Ab-514) antibody. The picture on the right is treated with the synthesized peptide.