

## Product datasheet for **TA313711**

### Cathepsin L (CTSL) Rabbit Polyclonal Antibody

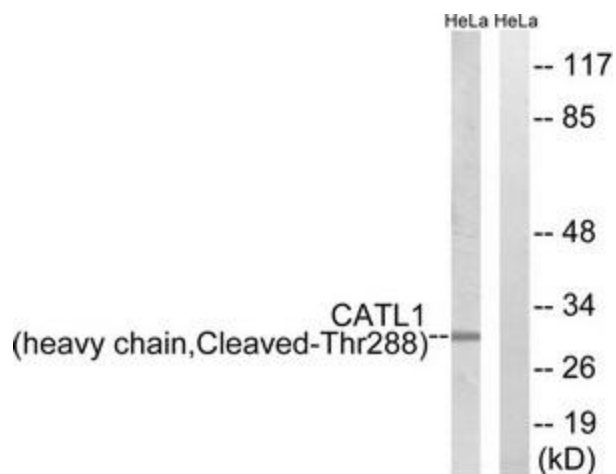
#### Product data:

Product Type:	Primary Antibodies
Applications:	WB
Recommended Dilution:	WB: 1:500~1:3000, ELISA: 1:10000
Reactivity:	Human
Host:	Rabbit
Isotype:	IgG
Clonality:	Polyclonal
Immunogen:	The antiserum was produced against synthesized peptide derived from human CATL1.
Formulation:	Phosphate buffered saline (without Mg <sup>2+</sup> and Ca <sup>2+</sup> ), pH 7.4, 150mM NaCl, 0.02% sodium azide and 50% glycerol.
Concentration:	lot specific
Purification:	The antibody was affinity-purified from rabbit antiserum by affinity-chromatography using epitope-specific immunogen.
Conjugation:	Unconjugated
Storage:	Store at -20°C as received.
Stability:	Stable for 12 months from date of receipt.
Gene Name:	cathepsin L
Database Link:	<a href="#">NP_666023</a> <a href="#">Entrez Gene 1514 Human</a> <a href="#">P07711</a>
Synonyms:	CATL; CTSL1; MEP
Note:	CATL1 (heavy chain, Cleaved-Thr288) antibody detects endogenous levels of fragment of activated CATL1 resulting from cleavage adjacent to Thr288.
Protein Families:	Druggable Genome, Protease
Protein Pathways:	Antigen processing and presentation, Lysosome



[View online »](#)

## Product images:



Western blot analysis of extracts from HeLa cells, treated with etoposide (25uM, 1 hour), using CATL1 (heavy chain, Cleaved-Thr288) antibody. The lane on the right is treated with the synthesized peptide.