

Product datasheet for **TA313709**

CTBP2 Rabbit Polyclonal Antibody

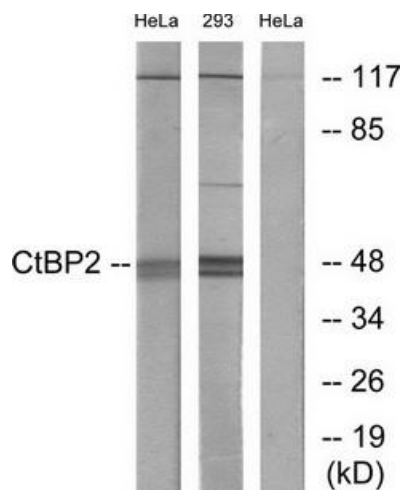
Product data:

Product Type:	Primary Antibodies
Applications:	WB
Recommended Dilution:	WB: 1:500~1:3000, ELISA: 1:1000
Reactivity:	Human, Mouse, Rat
Host:	Rabbit
Isotype:	IgG
Clonality:	Polyclonal
Immunogen:	The antiserum was produced against synthesized peptide derived from internal of human CtBP2.
Formulation:	Phosphate buffered saline (without Mg ²⁺ and Ca ²⁺), pH 7.4, 150mM NaCl, 0.02% sodium azide and 50% glycerol.
Concentration:	lot specific
Purification:	The antibody was affinity-purified from rabbit antiserum by affinity-chromatography using epitope-specific immunogen.
Conjugation:	Unconjugated
Storage:	Store at -20°C as received.
Stability:	Stable for 12 months from date of receipt.
Gene Name:	C-terminal binding protein 2
Database Link:	NP_001077383 Entrez Gene 13017 Mouse Entrez Gene 81717 Rat Entrez Gene 1488 Human P56545
Synonyms:	C-terminal binding protein 2; OTTHUMP00000020699; OTTHUMP00000020701; ribeye
Note:	CtBP2 antibody detects endogenous levels of total CtBP2 protein.
Protein Families:	Stem cell - Pluripotency, Stem cell relevant signaling - Wnt Signaling pathway
Protein Pathways:	Chronic myeloid leukemia, Notch signaling pathway, Pathways in cancer, Wnt signaling pathway



[View online »](#)

Product images:



Western blot analysis of extracts from HeLa cells and 293 cells, using CtBP2 antibody. The lane on the right is treated with the synthesized peptide.