

## Product datasheet for **TA313656**

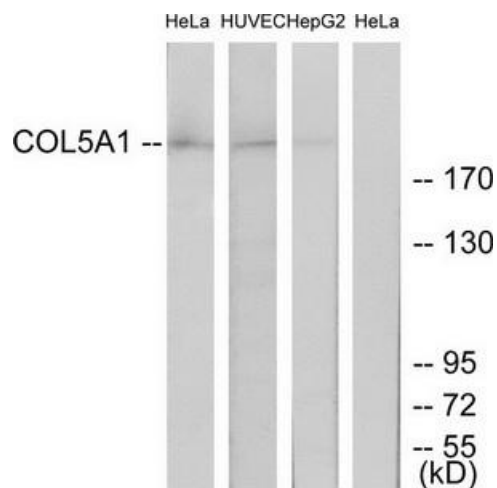
### Collagen V (COL5A1) Rabbit Polyclonal Antibody

#### Product data:

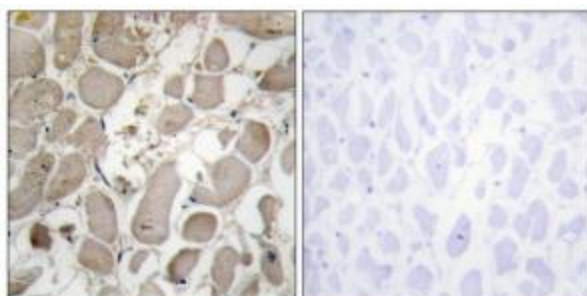
Product Type:	Primary Antibodies
Applications:	IF, IHC, WB
Recommended Dilution:	WB: 1:500~1:3000, IHC: 1:50~1:100, IF: 1:100~1:500, ELISA: 1:20000
Reactivity:	Human
Host:	Rabbit
Isotype:	IgG
Clonality:	Polyclonal
Immunogen:	The antiserum was produced against synthesized peptide derived from internal of human Collagen V a1.
Formulation:	Phosphate buffered saline (without Mg <sup>2+</sup> and Ca <sup>2+</sup> ), pH 7.4, 150mM NaCl, 0.02% sodium azide and 50% glycerol.
Concentration:	lot specific
Purification:	The antibody was affinity-purified from rabbit antiserum by affinity-chromatography using epitope-specific immunogen.
Conjugation:	Unconjugated
Storage:	Store at -20°C as received.
Stability:	Stable for 12 months from date of receipt.
Gene Name:	collagen type V alpha 1
Database Link:	<a href="#">NP_000084</a> <a href="#">Entrez Gene 1289 Human</a> <a href="#">P20908</a>
Synonyms:	alpha 1; alpha 1 type V collagen; collagen; OTTHUMP00000022513; OTTHUMP00000064637; type V
Note:	Collagen V .1 antibody detects endogenous levels of total Collagen V .1 protein.
Protein Families:	Druggable Genome
Protein Pathways:	ECM-receptor interaction, Focal adhesion



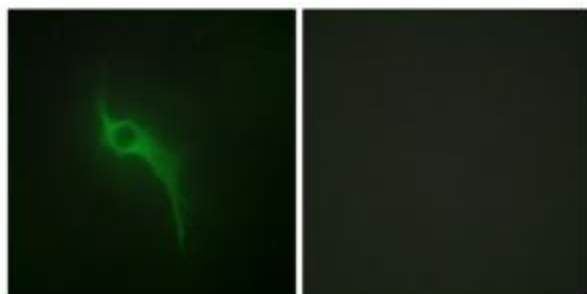
[View online »](#)

**Product images:**


Western blot analysis of extracts from HeLa cells, using Collagen V a1 antibody. The lane on the right is treated with the synthesized peptide.



Immunohistochemistry analysis of paraffin-embedded human heart tissue using Collagen V a1 antibody. The picture on the right is treated with the synthesized peptide.



Immunofluorescence analysis of HeLa cells, using Collagen V a1 antibody. The picture on the right is treated with the synthesized peptide.