

Product datasheet for **TA313427**

ADCY8 Rabbit Polyclonal Antibody

Product data:

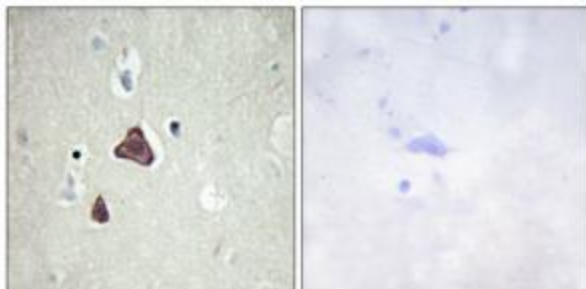
Product Type:	Primary Antibodies
Applications:	IF, IHC
Recommended Dilution:	IHC: 1:50~1:100, IF: 1:100~1:500, ELISA: 1:40000
Reactivity:	Human, Mouse, Rat
Host:	Rabbit
Isotype:	IgG
Clonality:	Polyclonal
Immunogen:	The antiserum was produced against synthesized peptide derived from internal of human ADCY8.
Formulation:	Phosphate buffered saline (without Mg ²⁺ and Ca ²⁺), pH 7.4, 150mM NaCl, 0.02% sodium azide and 50% glycerol.
Concentration:	lot specific
Purification:	The antibody was affinity-purified from rabbit antiserum by affinity-chromatography using epitope-specific immunogen.
Conjugation:	Unconjugated
Storage:	Store at -20°C as received.
Stability:	Stable for 12 months from date of receipt.
Gene Name:	adenylate cyclase 8 (brain)
Database Link:	NP_001106 Entrez Gene 11514 MouseEntrez Gene 29241 RatEntrez Gene 114 Human P40145
Synonyms:	AC8; ADCY3; HBAC1
Note:	ADCY8 antibody detects endogenous levels of total ADCY8 protein.
Protein Families:	Druggable Genome, Transmembrane



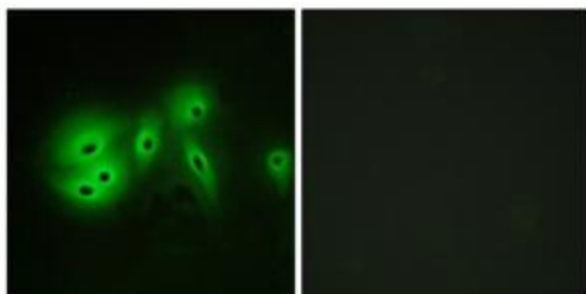
[View online »](#)

Protein Pathways:

Calcium signaling pathway, Chemokine signaling pathway, Dilated cardiomyopathy, Gap junction, GnRH signaling pathway, Long-term potentiation, Melanogenesis, Oocyte meiosis, Progesterone-mediated oocyte maturation, Purine metabolism, Taste transduction, Vascular smooth muscle contraction

Product images:

Immunohistochemistry analysis of paraffin-embedded human brain tissue, using ADCY8 antibody. The picture on the right is treated with the synthesized peptide.



Immunofluorescence analysis of A549 cells, using ADCY8 antibody. The picture on the right is treated with the synthesized peptide.