

Product datasheet for **TA313100**

MMP1 Rabbit Polyclonal Antibody

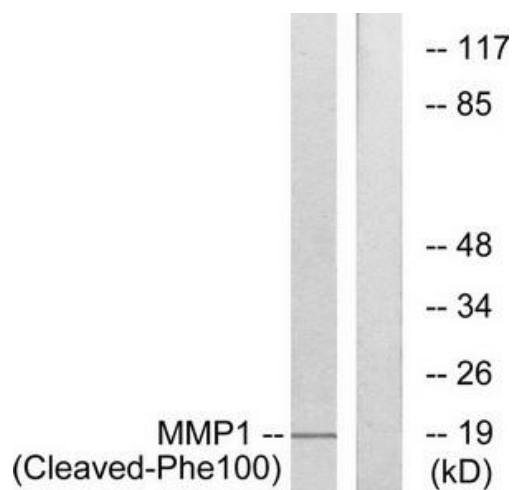
Product data:

Product Type:	Primary Antibodies
Applications:	WB
Recommended Dilution:	WB: 1:500~1:3000, ELISA: 1:10000
Reactivity:	Human
Host:	Rabbit
Isotype:	IgG
Clonality:	Polyclonal
Immunogen:	The antiserum was produced against synthesized peptide derived from human MMP1.
Formulation:	Phosphate buffered saline (without Mg ²⁺ and Ca ²⁺), pH 7.4, 150mM NaCl, 0.02% sodium azide and 50% glycerol.
Concentration:	lot specific
Purification:	The antibody was affinity-purified from rabbit antiserum by affinity-chromatography using epitope-specific immunogen.
Conjugation:	Unconjugated
Storage:	Store at -20°C as received.
Stability:	Stable for 12 months from date of receipt.
Gene Name:	matrix metalloproteinase 1
Database Link:	NP_002412 Entrez Gene 4312 Human P03956
Synonyms:	CLG; CLGN
Note:	MMP1 (Cleaved-Phe100) antibody detects endogenous levels of fragment of activated MMP1 resulting from cleavage adjacent to Phe100.
Protein Families:	Druggable Genome, Protease, Secreted Protein
Protein Pathways:	Bladder cancer, Pathways in cancer, PPAR signaling pathway



[View online »](#)

Product images:



Western blot analysis of extracts from 549 cells, treated with etoposide (25uM, 24hours), using MMP1 (Cleaved-Phe100) antibody. The lane on the right is treated with the synthesized peptide.