

## Product datasheet for **TA312925**

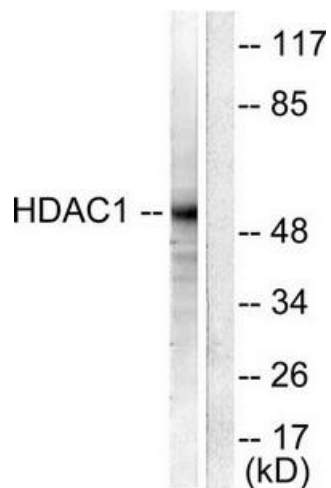
### HDAC1 Rabbit Polyclonal Antibody

#### Product data:

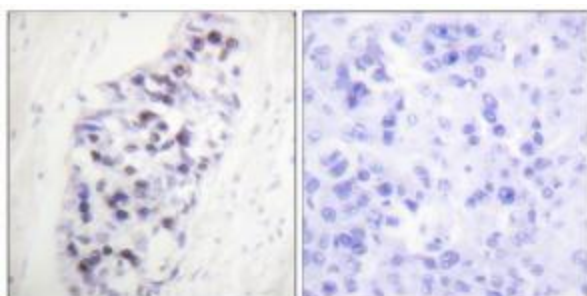
Product Type:	Primary Antibodies
Applications:	IHC, WB
Recommended Dilution:	WB: 1:500~1:3000, IHC: 1:50~1:100, IF: 1:100~1:500, ELISA: 1:10000
Reactivity:	Human, Mouse, Rat
Host:	Rabbit
Isotype:	IgG
Clonality:	Polyclonal
Immunogen:	The antiserum was produced against synthesized peptide derived from human HDAC1.
Formulation:	Phosphate buffered saline (without Mg <sup>2+</sup> and Ca <sup>2+</sup> ), pH 7.4, 150mM NaCl, 0.02% sodium azide and 50% glycerol.
Concentration:	lot specific
Purification:	The antibody was affinity-purified from rabbit antiserum by affinity-chromatography using epitope-specific immunogen.
Conjugation:	Unconjugated
Storage:	Store at -20°C as received.
Stability:	Stable for 12 months from date of receipt.
Gene Name:	histone deacetylase 1
Database Link:	<a href="#">NP_004955</a> <a href="#">Entrez Gene 297893 RatEntrez Gene 433759 MouseEntrez Gene 3065 Human Q13547</a>
Synonyms:	GON-10; HD1; RPD3; RPD3L1
Note:	HDAC1 antibody detects endogenous levels of total HDAC1 protein.
Protein Families:	Adult stem cells, Druggable Genome, Stem cell - Pluripotency, Stem cell relevant signaling - DSL/Notch pathway, Transcription Factors
Protein Pathways:	Cell cycle, Chronic myeloid leukemia, Huntington's disease, Notch signaling pathway, Pathways in cancer



[View online »](#)

**Product images:**

Western blot analysis of extracts from NIH/3T3 cells, using HDAC1 antibody (#TA312925). The lane on the right is treated with the synthesized peptide.



Immunohistochemical analysis of paraffin-embedded human lung carcinoma tissue using HDAC1 antibody (#TA312925). The picture on the right is treated with the synthesized peptide.