

## Product datasheet for **TA312900**

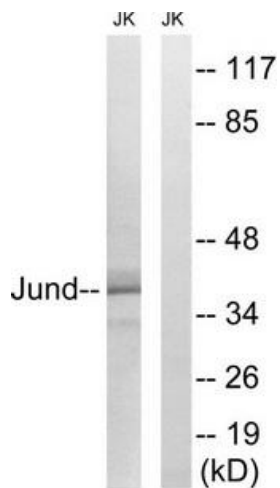
### JUND Rabbit Polyclonal Antibody

#### Product data:

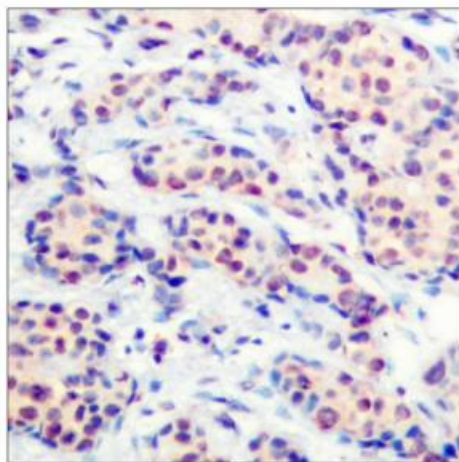
Product Type:	Primary Antibodies
Applications:	IHC, WB
Recommended Dilution:	WB: 1:500~1:3000, IHC: 1:50~1:100, IF: 1:100~1:500, ELISA: 1:20000, IP: Various Dilution
Reactivity:	Human, Mouse, Rat
Host:	Rabbit
Isotype:	IgG
Clonality:	Polyclonal
Immunogen:	The antiserum was produced against synthesized non-phosphopeptide derived from human JunD around the phosphorylation site of serine 255.
Formulation:	Phosphate buffered saline (without Mg <sup>2+</sup> and Ca <sup>2+</sup> ), pH 7.4, 150mM NaCl, 0.02% sodium azide and 50% glycerol.
Concentration:	lot specific
Purification:	The antibody was affinity-purified from rabbit antiserum by affinity-chromatography using epitope-specific immunogen.
Conjugation:	Unconjugated
Storage:	Store at -20°C as received.
Stability:	Stable for 12 months from date of receipt.
Gene Name:	JunD proto-oncogene, AP-1 transcription factor subunit
Database Link:	<a href="#">NP_005345</a> <a href="#">Entrez Gene 16478 Mouse</a> <a href="#">Entrez Gene 24518 Rat</a> <a href="#">Entrez Gene 3727 Human</a> <a href="#">P17535</a>
Synonyms:	AP-1
Note:	JunD (Ab-255) antibody detects endogenous levels of total JunD protein.
Protein Families:	Druggable Genome, Transcription Factors
Protein Pathways:	MAPK signaling pathway



[View online »](#)

**Product images:**

Western blot analysis of extracts from Jurkat cells, using JunD (Ab-255) Antibody. The lane on the right is treated with the synthesized peptide.



Immunohistochemistry analysis of paraffin-embedded human breast carcinoma tissue, using JunD (Ab-255) Antibody. The picture on the right is treated with the synthesized peptide.