

Product datasheet for **TA312556**

GPR86 (P2RY13) Rabbit Polyclonal Antibody

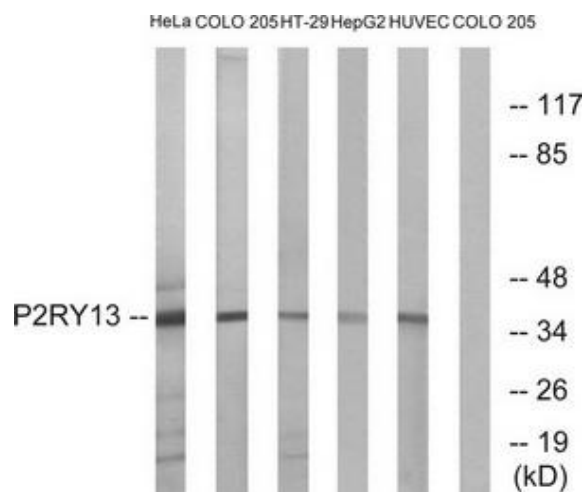
Product data:

Product Type:	Primary Antibodies
Applications:	WB
Recommended Dilution:	WB: 1:500~1:3000, ELISA: 1:20000
Reactivity:	Human, Rat
Host:	Rabbit
Isotype:	IgG
Clonality:	Polyclonal
Immunogen:	The antiserum was produced against synthesized peptide derived from internal of human P2RY13.
Formulation:	Phosphate buffered saline (without Mg ²⁺ and Ca ²⁺), pH 7.4, 150mM NaCl, 0.02% sodium azide and 50% glycerol.
Concentration:	lot specific
Purification:	The antibody was affinity-purified from rabbit antiserum by affinity-chromatography using epitope-specific immunogen.
Conjugation:	Unconjugated
Storage:	Store at -20°C as received.
Stability:	Stable for 12 months from date of receipt.
Gene Name:	purinergic receptor P2Y13
Database Link:	NP_795713 Entrez Gene 310444 Rat Entrez Gene 53829 Human Q9BPV8
Synonyms:	FKSG77; GPCR1; GPR86; GPR94; P2Y13; SP174
Note:	P2RY13 antibody detects endogenous levels of total P2RY13 protein.
Protein Families:	Druggable Genome, GPCR, Transmembrane
Protein Pathways:	Neuroactive ligand-receptor interaction



[View online »](#)

Product images:



Western blot analysis of extracts from HeLa cells, COLO cells, HT-29 cells, HepG2 cells and HUVEC cells, using P2RY13 antibody. The lane on the right is treated with the synthesized peptide.