

## Product datasheet for **TA312399**

### CD32A (FCGR2A) Rabbit Polyclonal Antibody

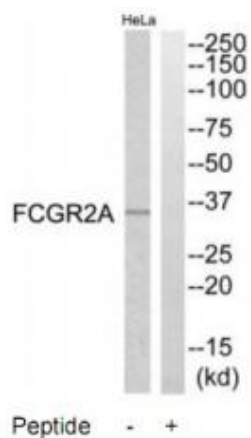
#### Product data:

|                       |  |
|-----------------------|--|
| Product Type:         | Primary Antibodies   |
| Applications:         | WB   |
| Recommended Dilution: | WB: 1:500~1:3000, ELISA: 1:20000   |
| Reactivity:           | Human  |
| Host:                 | Rabbit   |
| Isotype:              | IgG  |
| Clonality:            | Polyclonal   |
| Immunogen:            | The antiserum was produced against synthesized peptide derived from C-terminal of human FCGR2A.                                      |
| Formulation:          | Phosphate buffered saline (without Mg <sup>2+</sup> and Ca <sup>2+</sup> ), pH 7.4, 150mM NaCl, 0.02% sodium azide and 50% glycerol. |
| Concentration:        | lot specific   |
| Purification:         | The antibody was affinity-purified from rabbit antiserum by affinity-chromatography using epitope-specific immunogen.                |
| Conjugation:          | Unconjugated   |
| Storage:              | Store at -20°C as received.  |
| Stability:            | Stable for 12 months from date of receipt.   |
| Gene Name:            | Fc fragment of IgG receptor IIa  |
| Database Link:        | <a href="#">NP_067674</a><br><a href="#">Entrez Gene 2212 Human P12318</a>   |
| Synonyms:             | CD32; CD32A; CDw32; FCG2; FcGR; FCGR2; FCGR2A1; IGFR2  |
| Note:                 | FCGR2A antibody detects endogenous levels of total FCGR2A protein.   |
| Protein Families:     | ES Cell Differentiation/IPS, Transmembrane   |
| Protein Pathways:     | Fc gamma R-mediated phagocytosis, Systemic lupus erythematosus   |



[View online »](#)

## Product images:



Western blot analysis of extracts from HeLa cells, using FCGR2A antibody. The lane on the right is treated with the synthesized peptide.