

Product datasheet for **TA312259**

SMAD2 Rabbit Polyclonal Antibody

Product data:

Product Type:	Primary Antibodies
Applications:	IF
Recommended Dilution:	IF: 1:100~1:500, ELISA: 1:1000
Reactivity:	Human, Mouse, Rat
Modifications:	Phospho-specific
Host:	Rabbit
Isotype:	IgG
Clonality:	Polyclonal
Immunogen:	The antiserum was produced against synthesized phosphopeptide derived from human Smad2 around the phosphorylation site of threonine 220 (P-E-TP-P-P).
Formulation:	Phosphate buffered saline (without Mg ²⁺ and Ca ²⁺), pH 7.4, 150mM NaCl, 0.02% sodium azide and 50% glycerol.
Concentration:	lot specific
Purification:	The antibody was affinity-purified from rabbit antiserum by affinity-chromatography using epitope-specific immunogen.
Conjugation:	Unconjugated
Storage:	Store at -20°C as received.
Stability:	Stable for 12 months from date of receipt.
Gene Name:	SMAD family member 2
Database Link:	NP_005892 Entrez Gene 17126 Mouse Entrez Gene 29357 Rat Entrez Gene 4087 Human Q15796
Synonyms:	hMAD-2; hSMAD2; JV18; JV18-1; MADH2; MADR2
Note:	Smad2 (Phospho-Thr220) antibody detects endogenous levels of Smad2 only when phosphorylated at threonine 220.

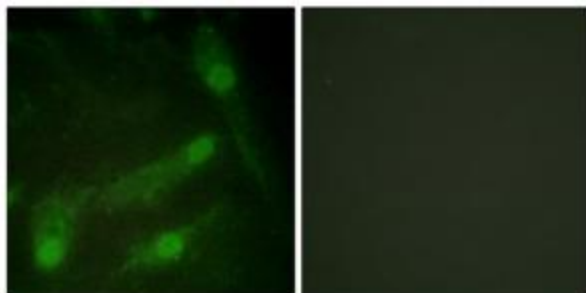


[View online »](#)

Protein Families: Cancer stem cells, Druggable Genome, Embryonic stem cells, ES Cell Differentiation/IPS, Stem cell relevant signaling - JAK/STAT signaling pathway, Stem cell relevant signaling - TGFb/BMP signaling pathway, Transcription Factors

Protein Pathways: Adherens junction, Cell cycle, Colorectal cancer, Pancreatic cancer, Pathways in cancer, TGF-beta signaling pathway, Wnt signaling pathway

Product images:



Immunofluorescence analysis of HeLa cells, using Smad2 (Phospho-Thr220) antibody. The picture on the right is treated with the synthesized peptide.