

Product datasheet for **TA312251**

Her2 (ERBB2) Rabbit Polyclonal Antibody

Product data:

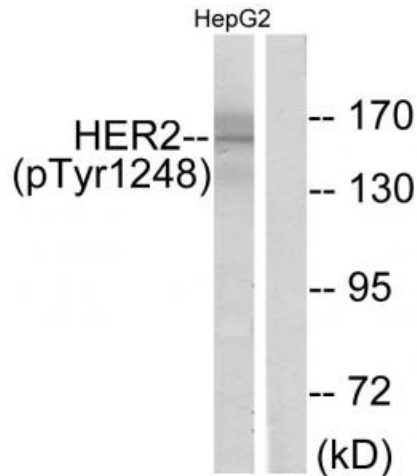
Product Type:	Primary Antibodies
Applications:	IHC, WB
Recommended Dilution:	WB: 1:500~1:3000, IHC: 1:50~1:100, ELISA: 1:20000
Reactivity:	Human, Mouse, Rat
Modifications:	Phospho-specific
Host:	Rabbit
Isotype:	IgG
Clonality:	Polyclonal
Immunogen:	HER2 (phospho-Tyr1248) antibody detects endogenous levels of HER2 only when phosphorylated at tyrosine 1248.
Formulation:	Phosphate buffered saline (without Mg ²⁺ and Ca ²⁺), pH 7.4, 150mM NaCl, 0.02% sodium azide and 50% glycerol.
Concentration:	lot specific
Purification:	The antibody was affinity-purified from rabbit antiserum by affinity-chromatography using epitope-specific immunogen.
Conjugation:	Unconjugated
Storage:	Store at -20°C as received.
Stability:	Stable for 12 months from date of receipt.
Gene Name:	erb-b2 receptor tyrosine kinase 2
Database Link:	NP_004439 Entrez Gene 13866 Mouse Entrez Gene 24337 Rat Entrez Gene 2064 Human P04626
Synonyms:	CD340; HER-2; HER2; MLN 19; NEU; neu; NGL; TKR1
Note:	HER2 (phospho-Tyr1248) antibody detects endogenous levels of HER2 only when phosphorylated at tyrosine1248.
Protein Families:	Druggable Genome, Protein Kinase, Transmembrane



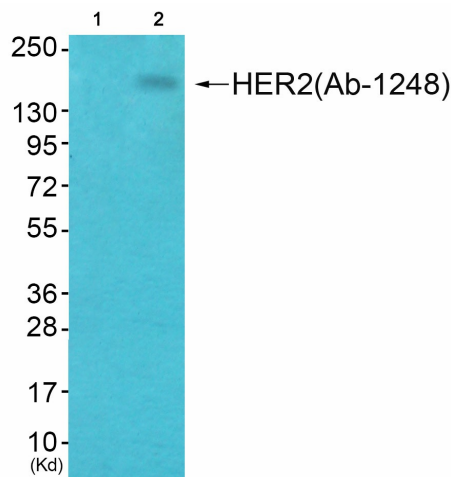
[View online »](#)

Protein Pathways:

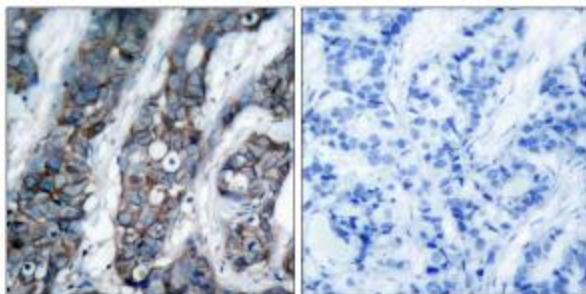
Adherens junction, Bladder cancer, Calcium signaling pathway, Endometrial cancer, ErbB signaling pathway, Focal adhesion, Non-small cell lung cancer, Pancreatic cancer, Pathways in cancer, Prostate cancer

Product images:


Western blot analysis of extracts from HepG2 cells, using HER2 (phospho-Tyr1248) antibody. The lane on the right is treated with the synthesized peptide.



Western blot analysis of extracts from HepG2 cells (Lane 2), using HER2 (Phospho-Tyr1248) Antibody. The lane on the left is treated with synthesized peptide.



Immunohistochemical analysis of paraffin-embedded human breast carcinoma tissue using HER2 (phospho-Tyr1248) antibody. The picture on the right is treated with the synthesized peptide.