

Product datasheet for **TA312179**

MMP9 Rabbit Polyclonal Antibody

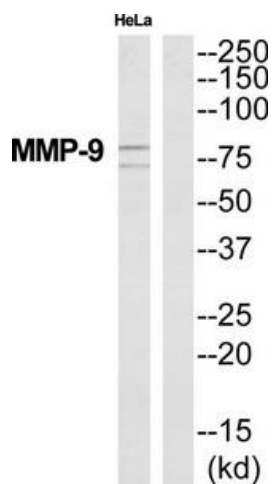
Product data:

Product Type:	Primary Antibodies
Applications:	IHC, WB
Recommended Dilution:	WB: 1:500~1:3000, IHC: 1:50~1:100, ELISA: 1:5000
Reactivity:	Human
Host:	Rabbit
Isotype:	IgG
Clonality:	Polyclonal
Immunogen:	The antiserum was produced against synthesized peptide derived from human MMP-9.
Formulation:	Phosphate buffered saline (without Mg ²⁺ and Ca ²⁺), pH 7.4, 150mM NaCl, 0.02% sodium azide and 50% glycerol.
Concentration:	lot specific
Purification:	The antibody was affinity-purified from rabbit antiserum by affinity-chromatography using epitope-specific immunogen.
Conjugation:	Unconjugated
Storage:	Store at -20°C as received.
Stability:	Stable for 12 months from date of receipt.
Gene Name:	matrix metalloproteinase 9
Database Link:	NP_004985 Entrez Gene 4318 Human P14780
Synonyms:	CLG4B; GELB; MANDP2; MMP-9
Note:	MMP-9 antibody detects endogenous levels of total MMP-9 protein.
Protein Families:	Druggable Genome, Protease
Protein Pathways:	Bladder cancer, Leukocyte transendothelial migration, Pathways in cancer

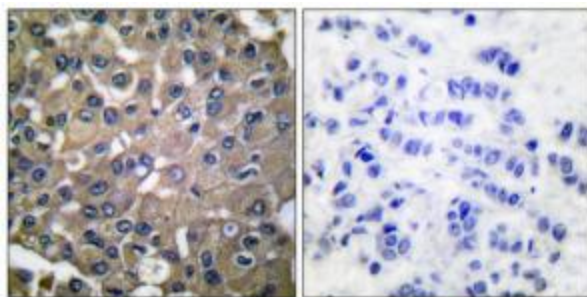


[View online »](#)

Product images:



Western blot analysis of extracts from HeLa cells, using MMP-9 antibody (#TA312179). The lane on the right is treated with the synthesized peptide.



Immunohistochemical analysis of paraffin-embedded human breast carcinoma tissue using MMP-9 antibody (#TA312179). The picture on the right is treated with the synthesized peptide.