

Product datasheet for **TA312172**

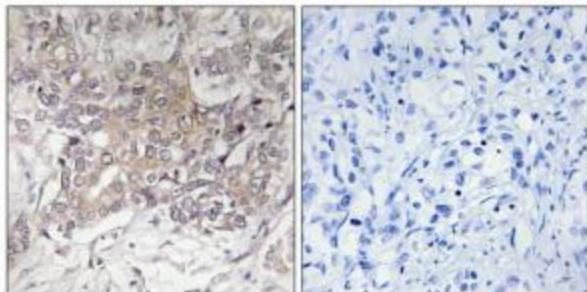
GCNT3 Rabbit Polyclonal Antibody

Product data:

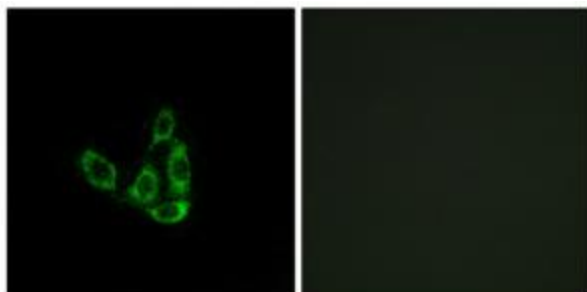
Product Type:	Primary Antibodies
Applications:	IF, IHC
Recommended Dilution:	IHC: 1:50~1:100, IF: 1:100~1:500, ELISA: 1:40000
Reactivity:	Human
Host:	Rabbit
Isotype:	IgG
Clonality:	Polyclonal
Immunogen:	The antiserum was produced against synthesized peptide derived from internal of human GCNT3.
Formulation:	Phosphate buffered saline (without Mg ²⁺ and Ca ²⁺), pH 7.4, 150mM NaCl, 0.02% sodium azide and 50% glycerol.
Concentration:	lot specific
Purification:	The antibody was affinity-purified from rabbit antiserum by affinity-chromatography using epitope-specific immunogen.
Conjugation:	Unconjugated
Storage:	Store at -20°C as received.
Stability:	Stable for 12 months from date of receipt.
Gene Name:	glucosaminyl (N-acetyl) transferase 3, mucin type
Database Link:	NP_004742 Entrez Gene 9245 Human O95395
Synonyms:	4GnT; C2; C2GNT2; C2GNTM; C24GNT; GNTM
Note:	GCNT3 antibody detects endogenous levels of total GCNT3 protein.
Protein Families:	Transmembrane
Protein Pathways:	Metabolic pathways, O-Glycan biosynthesis



[View online »](#)

Product images:

Immunohistochemistry analysis of paraffin-embedded human liver carcinoma tissue using GCNT3 antibody. The picture on the right is treated with the synthesized peptide.



Immunofluorescence analysis of A549 cells, using GCNT3 antibody. The picture on the right is treated with the synthesized peptide.