

Product datasheet for **TA312026**

PFKP Rabbit Polyclonal Antibody

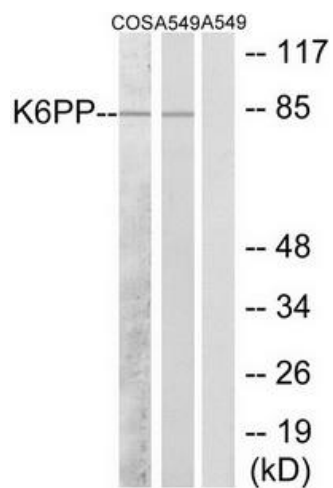
Product data:

Product Type:	Primary Antibodies
Applications:	WB
Recommended Dilution:	WB: 1:500~1:3000, ELISA: 1:1000
Reactivity:	Human, Mouse, Rat
Host:	Rabbit
Isotype:	IgG
Clonality:	Polyclonal
Immunogen:	The antiserum was produced against synthesized peptide derived from internal of human K6PP.
Formulation:	Phosphate buffered saline (without Mg ²⁺ and Ca ²⁺), pH 7.4, 150mM NaCl, 0.02% sodium azide and 50% glycerol.
Concentration:	lot specific
Purification:	The antibody was affinity-purified from rabbit antiserum by affinity-chromatography using epitope-specific immunogen.
Conjugation:	Unconjugated
Storage:	Store at -20°C as received.
Stability:	Stable for 12 months from date of receipt.
Gene Name:	phosphofructokinase, platelet
Database Link:	NP_002618 Entrez Gene 56421 Mouse Entrez Gene 60416 Rat Entrez Gene 5214 Human Q01813
Synonyms:	ATP-PFK; PFK-C; PFK-P; PFKF
Note:	K6PP antibody detects endogenous levels of total K6PP protein.
Protein Families:	Druggable Genome
Protein Pathways:	Fructose and mannose metabolism, Galactose metabolism, Glycolysis / Gluconeogenesis, Metabolic pathways, Pentose phosphate pathway



[View online »](#)

Product images:



Western blot analysis of extracts from COS-7 cells and A549 cells, using K6PP antibody. The lane on the right is treated with the synthesized peptide.