

Product datasheet for **TA312003**

MMP7 Rabbit Polyclonal Antibody

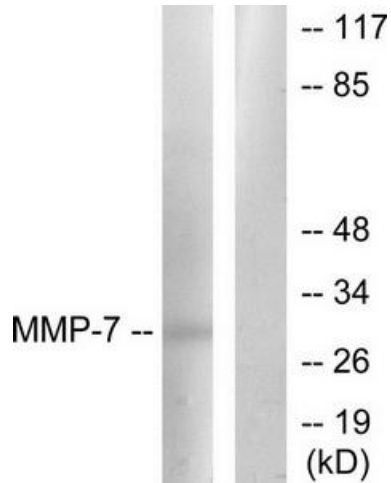
Product data:

Product Type:	Primary Antibodies
Applications:	IHC, WB
Recommended Dilution:	WB: 1:500~1:3000, IHC: 1:50~1:100, ELISA: 1:5000
Reactivity:	Human, Mouse, Rat
Host:	Rabbit
Isotype:	IgG
Clonality:	Polyclonal
Immunogen:	The antiserum was produced against synthesized peptide derived from human MMP-7.
Formulation:	Phosphate buffered saline (without Mg ²⁺ and Ca ²⁺), pH 7.4, 150mM NaCl, 0.02% sodium azide and 50% glycerol.
Concentration:	lot specific
Purification:	The antibody was affinity-purified from rabbit antiserum by affinity-chromatography using epitope-specific immunogen.
Conjugation:	Unconjugated
Storage:	Store at -20°C as received.
Stability:	Stable for 12 months from date of receipt.
Gene Name:	matrix metalloproteinase 7
Database Link:	NP_002414 Entrez Gene 17393 Mouse Entrez Gene 25335 Rat Entrez Gene 4316 Human P09237
Synonyms:	MMP-7; MPL1; PUMP-1
Note:	MMP-7 antibody detects endogenous levels of total MMP-7 protein.
Protein Families:	Druggable Genome, Protease
Protein Pathways:	Wnt signaling pathway

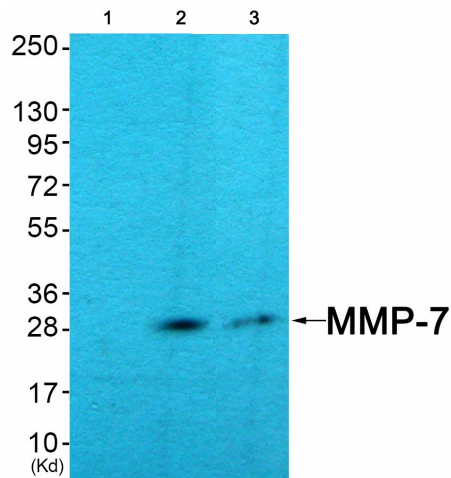


[View online »](#)

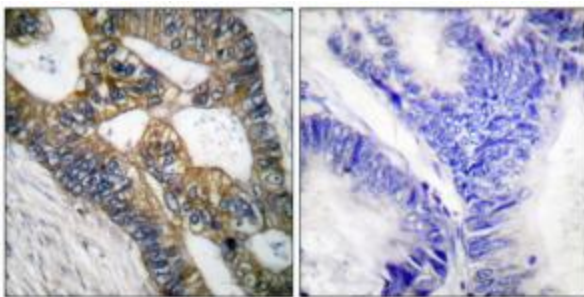
Product images:



Western blot analysis of extracts from COS7 cells, using MMP-7 antibody (#TA312003).The lane on the right is treated with the synthesized peptide.



Western blot analysis of extracts from COS7 cells (Lane 2) and HuvEc cells (Lane 3), using MMP-7 Antibody. The lane on the left is treated with synthesized peptide.



Immunohistochemical analysis of paraffin-embedded human colon carcinoma tissue using MMP-7 antibody (#TA312003).The picture on the right is treated with the synthesized peptide.