

Product datasheet for **TA311965**

Integrin alpha 5 (ITGA5) Rabbit Polyclonal Antibody

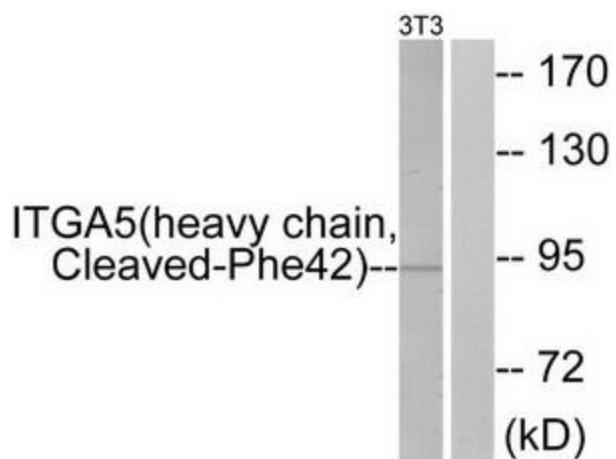
Product data:

Product Type:	Primary Antibodies
Applications:	WB
Recommended Dilution:	WB: 1:500~1:3000, ELISA: 1:10000
Reactivity:	Human, Mouse
Host:	Rabbit
Isotype:	IgG
Clonality:	Polyclonal
Immunogen:	The antiserum was produced against synthesized peptide derived from human ITGA5.
Formulation:	Phosphate buffered saline (without Mg ²⁺ and Ca ²⁺), pH 7.4, 150mM NaCl, 0.02% sodium azide and 50% glycerol.
Concentration:	lot specific
Purification:	The antibody was affinity-purified from rabbit antiserum by affinity-chromatography using epitope-specific immunogen.
Conjugation:	Unconjugated
Storage:	Store at -20°C as received.
Stability:	Stable for 12 months from date of receipt.
Gene Name:	integrin subunit alpha 5
Database Link:	NP_002196 Entrez Gene 16402 Mouse Entrez Gene 3678 Human P08648
Synonyms:	CD49e; FNRA; VLA-5; VLA5A
Note:	ITGA5 (heavy chain, Cleaved-Phe42) antibody detects endogenous levels of fragment of activated ITGA5 resulting from cleavage adjacent to Phe42.
Protein Families:	Druggable Genome, ES Cell Differentiation/IPS, Transmembrane
Protein Pathways:	Arrhythmogenic right ventricular cardiomyopathy (ARVC), Dilated cardiomyopathy, ECM-receptor interaction, Focal adhesion, Hematopoietic cell lineage, Hypertrophic cardiomyopathy (HCM), Regulation of actin cytoskeleton



[View online »](#)

Product images:



Western blot analysis of extracts from 3T3 cells, treated with etoposide (25uM, 24hours), using ITGA5 (heavy chain, Cleaved-Phe42) antibody. The lane on the right is treated with the synthesized peptide.