

Product datasheet for **TA311770**

alpha Synuclein (SNCA) Rabbit Polyclonal Antibody

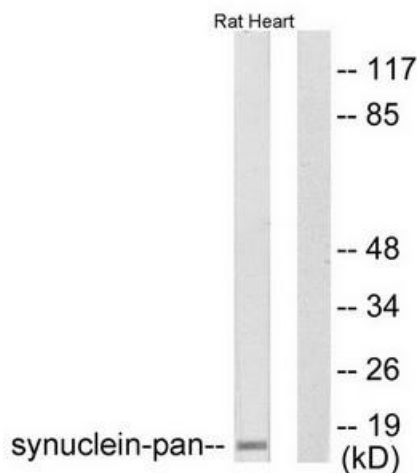
Product data:

Product Type:	Primary Antibodies
Applications:	IHC, WB
Recommended Dilution:	WB: 1:500~1:3000, IHC: 1:50~1:100, ELISA: 1:5000
Reactivity:	Human, Mouse, Rat
Host:	Rabbit
Isotype:	IgG
Clonality:	Polyclonal
Immunogen:	The antiserum was produced against synthesized peptide derived from human synuclein.
Formulation:	Phosphate buffered saline (without Mg ²⁺ and Ca ²⁺), pH 7.4, 150mM NaCl, 0.02% sodium azide and 50% glycerol.
Concentration:	lot specific
Purification:	The antibody was affinity-purified from rabbit antiserum by affinity-chromatography using epitope-specific immunogen.
Conjugation:	Unconjugated
Storage:	Store at -20°C as received.
Stability:	Stable for 12 months from date of receipt.
Gene Name:	synuclein alpha
Database Link:	NP_000336 Entrez Gene 20617 Mouse Entrez Gene 29219 Rat Entrez Gene 6622 Human P37840
Synonyms:	NACP; PARK1; PARK4; PD1
Note:	Synuclein-pan antibody detects endogenous levels of total Synuclein protein.
Protein Families:	Druggable Genome
Protein Pathways:	Alzheimer's disease, Parkinson's disease

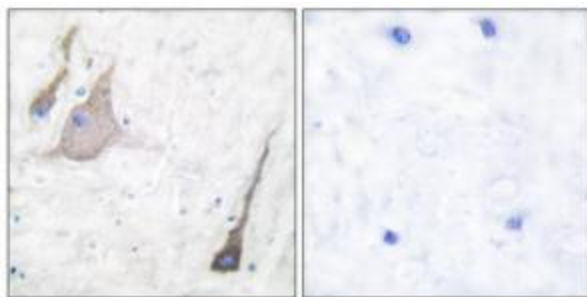


[View online »](#)

Product images:



Western blot analysis of extracts from rat heart, using Synuclein-pan antibody (#TA311770). The lane on the right is treated with the synthesized peptide.



Immunohistochemical analysis of paraffin-embedded human brain tissue using Synuclein-pan antibody (#TA311770). The picture on the right is treated with the synthesized peptide.